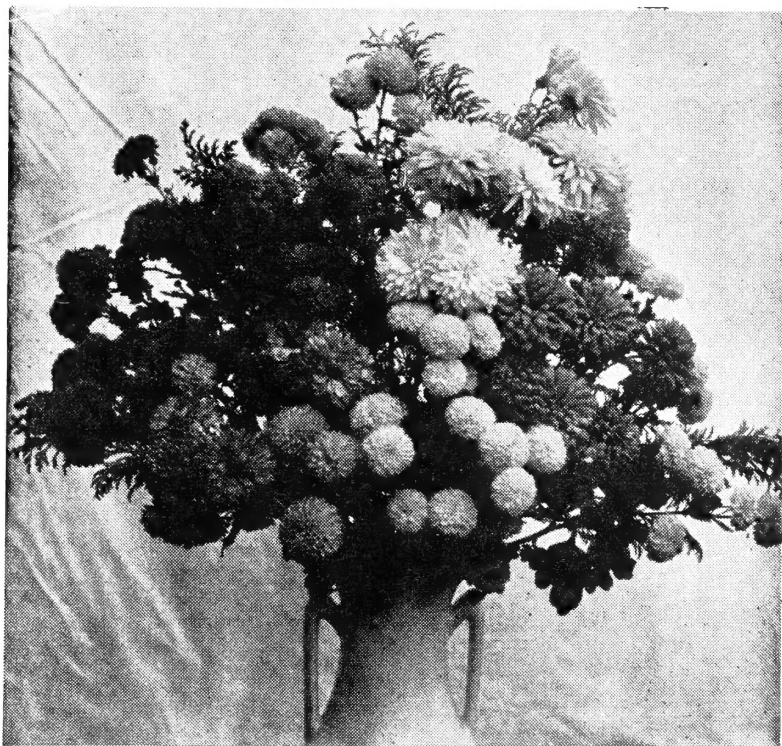


# Swedberg's

## PLANT GUIDE

Values in Fruit, Windbreak  
and Evergreen Trees; Shrubs;  
Flowers, Berries and Plants

ACCLIMATED TO NORTHERN CONDITIONS



Hardy Garden Chrysanthemums

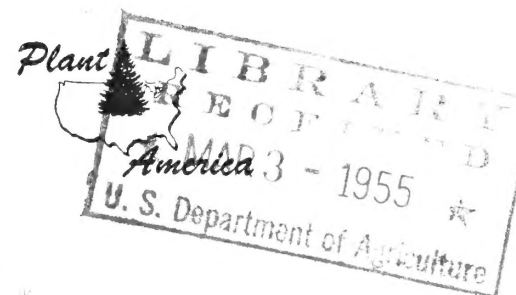
**2 CHOICE NEW SUPER HARDY MINNESOTA CHERRIES**

**NORTH  
STAR**

**NEW METEOR**

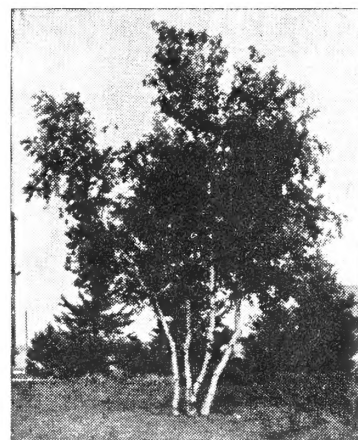
**NEW DWARF PIE CHERRY** from U. of Minn. matures big, glistening mahogany-red, real pie cherries on DWARF 5 to 7 ft. trees—early in July! North Star fruits are of superb quality, Morello type, free stone,

**MINNESOTA'S JUMBO PIE CHERRY:** Extra big, sparkling red, genuine pie cherries—loaded on full sized 8 to 10 ft. cherry trees that thrive in Minnesota's severe climate!



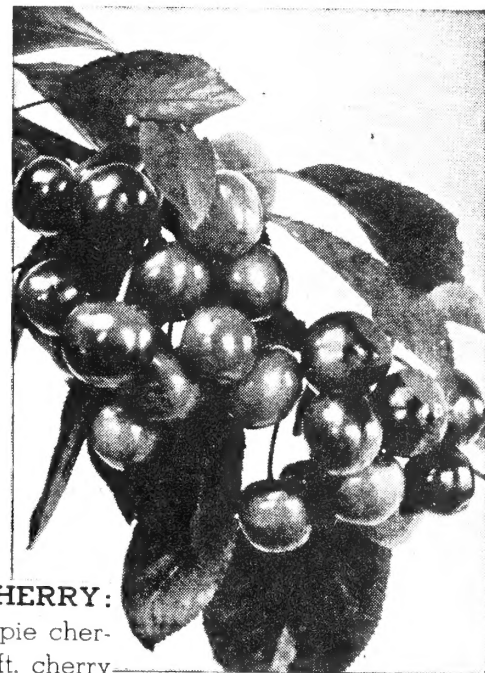
## 1955 CATALOG

**BIRCH**  
Plant 3 or  
More Birch  
Trees in one  
hole to form  
group effect.  
See page 16.



Clump Birch

Hardy  
Early  
Mums  
See  
Page 21



# HOW TO ORDER

## READ BEFORE ORDERING

"Service, Quality and Fair Prices since 1915."

We deeply appreciate your loyalty and kind patronage, and hope to serve you better this season because of larger supplies and better stock.

We do not send out seconds or inferior grades.

Northern trees and shrubs are hardy. Nursery stock that can stand the winters in Otter Tail County can stand the severest weather in the United States and Alaska, where our stock goes.

**TERMS:** Cash with order unless otherwise agreed upon. Remit by P.O. or Express Money Orders, bank draft or if by personal check (add exchange charge on \$3.00 orders and less).

**ORDER EARLY:** You may send order early and remit when requesting your shipment if desired.

**HOW TO SHIP:** We ship by express or freight; smaller shipments by parcel post. Prices in this list are f.o.b. Battle Lake unless noted. If you cannot figure postage,

have us ship C.O.D. for postage. Order should be not less than \$1.00.

**PLANTING INSTRUCTIONS** accompany each order sent out in the shipping and inspection tag.

**DOZEN RATES:** You must order not less than 3 each of 4 varieties to get dozen rate on fruits, and 6 of each variety of perennial flowers to get dozen rates.

**GUARANTEE:** Any stock failing to grow will be replaced at one-half the original cost if report is made within 90 days of receipt of order. We will replace any portion of the stock that proves untrue to name or refund price paid for such portion. Send sales slip and order number if possible.

**LANDSCAPE PLANS:** We will make a neat colored plan of house foundation planting, front yard, side yard, and back yard Outdoor Living Room plantings. A larger plan for public parks, school grounds, and cemeteries, etc., can also be secured at slightly higher price. Be sure to give full dimensions and show all existing windows, doors, trees, and walks.

If you want a Plan drawn for you send for special ruled paper with instructions for you. Send \$5.00 to us and we will credit you \$5.00 when \$50.00 or more in Nursery Stock is on order.

# INDEX

	Page
Apples .....	3
Asparagus .....	3
Begonias & Cannas .....	24
Blackberries .....	6
Blueberries .....	7
Boysenberries .....	4
Cherries .....	4
Cherry-Plums .....	21
Chrysanthemums .....	21
Clematis .....	7
Currants .....	5
Flowering Crabs .....	3
Gladiolus .....	26
Gooseberries .....	26
Grapes .....	26
Hedges .....	26
Lilacs .....	26
Mums, Hardy .....	21
Pears .....	4
Perennials .....	20
Plums and Prunes .....	6
Raspberries .....	5
Rhubarb .....	12
Roses .....	16
Shade Trees .....	16
Shrubs .....	8
Strawberries .....	6
Vines .....	7
Windbreaks .....	16

## ORCHARD SPECIAL

The following Apples and Plums Make a Fine Orchard.

### APPLES AND CRABS

Fireside, Haralson, Yellow-Transparent, Prairie Spy & Redwell Apples. Chestnut & Whitney Crabs.

### PLUMS AND CHERRIES

LaCresent, Pipestone, Underwood, and Waneta Plums. Compass Cherry and Mordens Sapa Cherry Plum

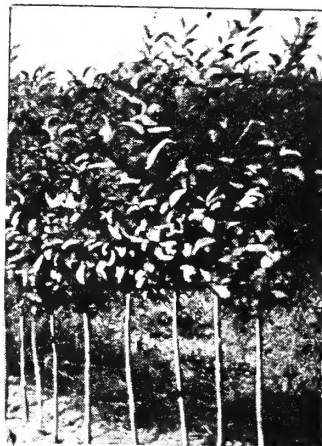
### YOUR CHOICE OF ABOVE

2 or More of Each Kind Postpaid to 2nd Zone Only

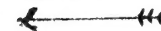
10 3-4ft. Trees only \$ 9.00 Postpaid

Your Choice of Cherries and Plums listed above (2 of Each)

10 3-4 ft. Trees only \$10.50



NICE STURDY NORTHERN 3 to 4ft. APPLE TREES



Pillsbury N. D. Aug. 18, 1954  
 Dear Sirs- Do you have anyway of checking on an order. I have 3 trees, two are bearing fruit the 2nd yr. planting. I picked some fruit this morning: Oh, so good. I don't know why have not planted these before. A cherry plum-the fruit is purple. Hope you know what I planted. E.G.  
 (We keep records of all Orders)

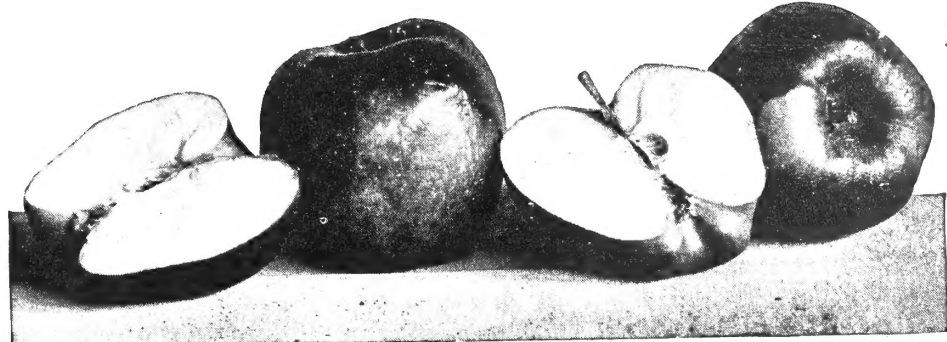
# APPLE TREES

## All The Best Varieties

APPLE and CRAB APPLE PRICES

HEIGHT	Per EACH	Per EACH
Heavy (1 to 19)	(20 or More)	
3 to 4 ft.	\$1.00	\$ .90
4 to 5 ft.	1.40	1.25
5 to 6 ft.	1.50	1.40

-Northern Trees are Heavy-



Larger sizes some varieties'

### SUMMER APPLES

- ANOKA-Early bearing apple
- BEACON-Best early good red.
- MANTET-Hardy Canadian apple.
- ORICLE-Large.Tender & juicy.
- RED DUCHESS-Good old apple.
- YELLOW TRANSPARENT-Red blush

### FALL APPLES

- CORTLAND-Hary McIntosh sdlg.
- LAKELAND-Bright red.Hangs to tree untill red.
- MIN-JON-Red Minn.Jonathan.
- N.W.GREENING-Ig. yel.-green.
- WEALTHY-All around keeper.
- VICTORY-White flesh. Salads.

### WINTER APPLES

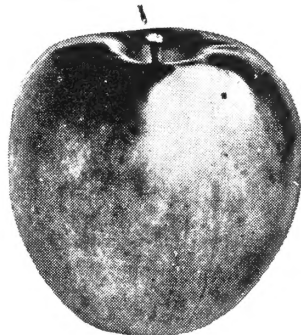
- FIRESIDE-Large Minn.Delicious
- HARALSON-Best Red Keeper
- HIBERNAL-Green.Very hardy.
- FRAIRIE SPY-Good red keeper
- REDWELL-Bright red keeper.

## CRAB APPLES

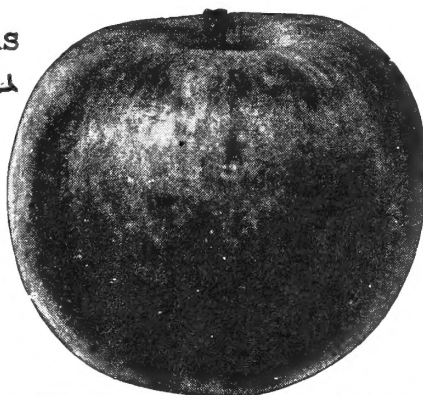
- CHESTNUT-Large dessert crab.
- DOLGO-Ornamental. Pink fls. red crabs for jelly,pickles.
- EARLY STRAWBERRY-Good to eat.
- SWEET RUSSETT-Sweet & tasty.
- VIRGINIA-For pickles & jelly.
- WHITNEY- Large, dependable sauce or eating crab. Best.



BEACON APPLE



Victory Apple



Flowering Crab

## FLOWERING CRABS

ALMEY-Rosy Bloom Flame Crab. Fls. red with white star.

4 to 5 ft.Trees Each \$3.25  
5 to 6 ft.Trees Each 3.75

### HOPA CRAB

Blood Red buds are followed by a mass of fragrant deep rose blossoms.Foliage a red-dish-purple then deep green. Ornamental jelly crab.

3 to 4 ft.Trees Each \$1.75  
5 to 6 ft.Trees Each 2.50

### HOPA Seedlings

1½-2 ft. transplants ea.30¢  
10 for \$2.65; 100 for\$24.00

### BECHTEL'S CRAB

Large double Rose Flowers .  
3 to 4 ft.Trees Each \$2.00

### RED SPLENDOR CRAB

NEW- A seedling of the Red Silver Crab originated in northern Minn. Flowers open red, change to pink, then to white. A valuable tree for its long blooming season.In the spring foliage is purplish-green with deep color all summer.Very hardy tree.

4 to 5 ft. Trees Ea. \$2.00  
5 to 6 ft. Trees Ea. 2.50

"Northern Rooted"  
Fruit Trees

# CHERRIES

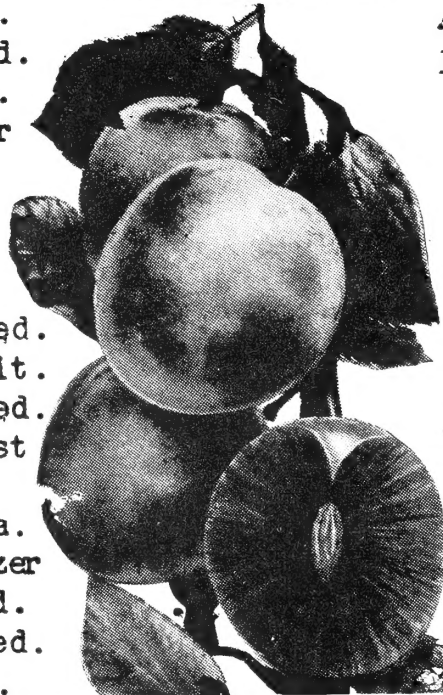
## PLUMS AND CHERRY PRICES

HEIGHT	EACH (1 to 19)	EACH (20 or more)
3 to 4 ft.	\$1.25	\$1.10
4 to 5 ft.	1.55	1.35
5 to 6 ft.	1.75	1.60

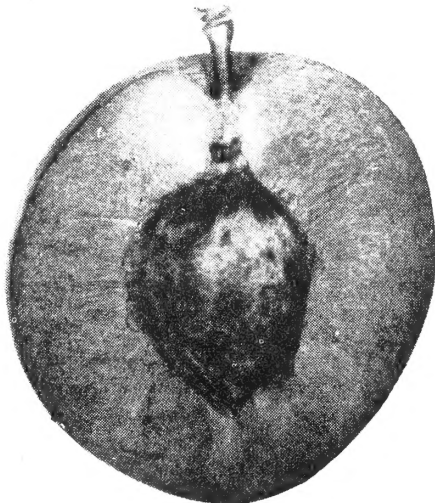
\* Cherry \*\*Cherry-Plum

### PLUMS

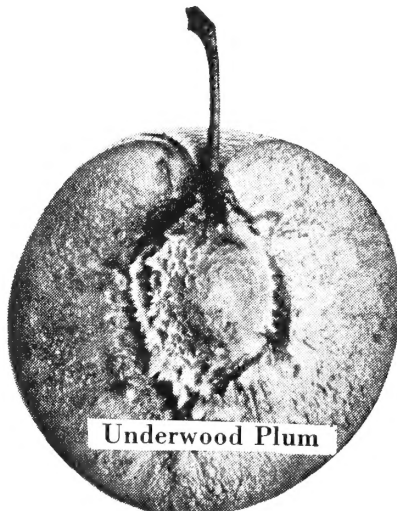
- \*COMPASS--Earliest fruit. For sauce or jelly. A pollenizer.
- EMBER--Yellow with red blush.
- FEIBING PRIZE--Large, dark red.
- LACRESENT--Sweet yellow plum.
- KAGA--Med. red; apricot flavor for jam. A pollenizer.
- KAHINTA--Dark red freestone.
- MONITOR--Late large red.
- MT. ROYAL-- Blue prune type.
- PIPESTONE--Highest quality red.
- RED COAT--Freestone. Oval fruit.
- RED GLOW--Largest earliest red.
- \*\*SAPA--Dark red meat. The best jam and sauce plum.
- \*\*SAPA MORDENS--Canadian Sapa.
- SO. DAK. #27--Freestone. Pollenizer
- SUPERIOR--Best mid. season red.
- UNDERWOOD--Best all around red.
- WANETA--Large red. Small pits.



Giant Red-Fleshed Cherry-Plum (Sapa)



Monitor Plum



Underwood Plum

### METEOR-

METEOR CHERRY--Midseason. Clear light red sour pie cherry of large size; freestone. A hardy Minn. Introduction.

4-6 ft. Heavy trees Each \$2.95  
10 for ..... \$27.50

### NORTHSTAR

NORTH STAR--Early sour cherry. Bright red to dark. Self fertile  
4-6ft. heavy trees Ea. \$2.95  
10 for ..... \$27.50

HANSON'S BUSH CHERRY--Improved bessey sand cherry. Low growing shrub that produces abundance of juicy dark fruit for canning or eating fresh.

2 to 3 ft. .... \$0.85 each; 2 for \$1.55  
18 to 24 in. .... .70 each; 2 for 1.25

### HARDY APRICOTS

- MANCHU-- Good lemon yellow self pollenizing and freestone. One of largest.
- SCOUT--Hardy Canadian fruit  
4-6ft. trees \$1.75 each  
10 for ..... \$16.00

### PEARS

GOLDEN SPICE--Minn. No. 4--Worth trying this far to the north..

PARKER--Fruit medium large clear med. yellow with a blush. Juicy, sweet, tender. Hardy in southern Minn.

5 to 6ft. trees ea. \$1.75.  
20 trees or more \$1.50

Wilton Jc, Iowa Jan 18, 1955.  
--Five years ago I bought some Hibernial Apple Trees for grafting. They did fine and I want some more ----D.A.

# CURRENTS

## RED LAKE CURRANT

Large fine red berries in large clusters. 2 yr. Heavy 60¢ each; 10 for ....\$5.00

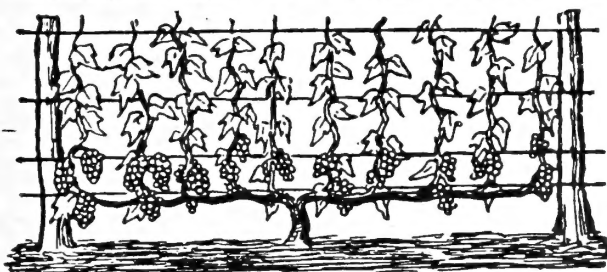
↘ **CASCADE-** (Minn.No.70) The Cascade begins to ripen a week before Red Lake. Red 2 yr. 65¢; 10 for ...\$5.50

↘ **WHITE GRAPE-**Sweet white. 2 yr. 50¢ Ea.; 10 for \$4.00

## PIXWELL GOOSEBERRY

A No.Dak. introduction. A high quality, large oval light green fruit turning pink. Easily picked. 2 yr. Heavy 80¢ Ea. 10 for \$ 7.00

### CORRECT WAY TO TRAIN GRAPE VINES



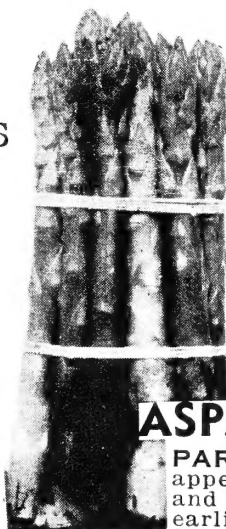
## NEW MINNESOTA HARDY GRAPES

↘ **Blue Jay.** The Minnesota Fruit Breeding Farm originated this hardy and vigorous variety. The blue-black berries are borne in medium to large sized clusters and are very good for juice and jelly. It should be planted with another variety to obtain the best yields.

↘ **Moonbeam.** This "white" Grape with a mild and sweet flavor is borne in medium sized clusters, but the berries are large. It is an excellent ornamental variety because the clean, attractive leaves are dark green above and silvery beneath.

↘ **Red Amber.** This very productive, amber-red variety was originated at the Minnesota Fruit Breeding Farm. The sweetest and most highly flavored of the hardy Grapes. Quality very good for cooking and eating.

EACH \$1.00 5 for \$4.25



## ASPARAGUS

2 yr. old. Doz., \$1.20; 25, \$1.95; 100, \$4.75. **Postpaid, 100, \$5.50.**

**PARADISE.** One of the newer varieties, very similar in appearance to the Washington. Is highly rust-resistant and a heavier producer. Grows a larger crop a full year earlier.

**CHIVES (Schnittlauch).** Grass onion. An ornamental with balls of blossoms—foliage very useful for flavoring. **Postpaid, each, 60c.**

**MINT. Spearmint,** the mint of mint juleps. Easily grown **Postpaid, each, 45c.**

**BOHEMIAN HORSERADISH.** The best cultivated variety. **Postpaid, doz., 75c.**



Blue Jay.



## RED RHUBARB CHIPMAN'S

Extremely large stalks that are red bottom to top, even the flesh is red. It does not lose rich color in cooking. Skin is so tender you need not peel it. Juicy and sweet

**RUBY RED**—Another Canadian variety. The stalk is deep red inside as well as the skin. Can be cooked with skin on. Makes rich red sauce. Mix with strawberries for a grand combination.

## VALENTINE *Mildest and Sweetest*

Introduced from Canada newest and best of the red rhubarbs. It is sweetest of all, requiring the least sugar. Makes delicious pies and a smooth, tender, bright red sauce. Combines rich flavor, high quality and vigorous growth. Excellent for home use and freezing.

### RHUBARB PRICES

	1-4 Each	5-9 Each	10 Up Each
Chipman's Canada Red	\$.75	.65	.50
McDonald	.65	.60	.55
RUBY RED—	.50	.40	.35
Valentine	1.00	.90	.80

### EDIBLE PERENNIALS

## GRAPES

↘ **Beta.** It is vigorous and hardy; well suited to the north central states. The blue-black Grapes are fine for jelly and juice.

↘ **Concord.** Most widely grown Grape in the United States. The berries are blue-black, sweet and borne in large clusters.

↘ **FREDONIA**—New early blue-black grape. Juicy, solid, tender and good quality.

PRICE OF GRAPES	PRICE	POSTAGE
2yr. Heavy Each	\$ .50	allow 20¢
3 Vines for	1.40	40¢
5 Vines for	2.00	50¢

# Raspberries Strawberries

## PRICES OF RED RASPBERRIES

Strong plants, No. 1)

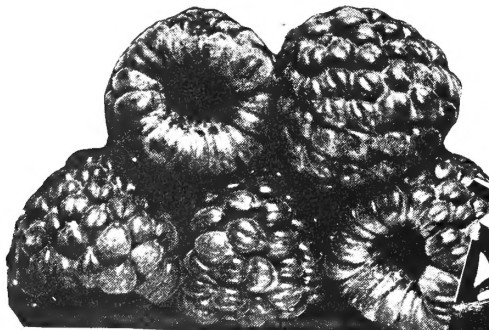
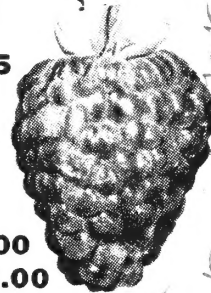
	12	25	50	100
2 year heavy				
Chief . . . .	\$1.85	\$3.50	\$6.50	\$11.00
Latham . .	1.85	3.50	6.50	11.00
Latham				
3-year heavy	2.45	\$4.50	\$8.50	\$14.00
1-year heavy		\$2.45	\$4.50	\$8.50

## EVERBEARING RASPBERRIES

	6	12	25	50
Indian Summer				
Black Hawk		2.00	3.85	7.25
Durham, —	\$1.85	\$3.50	\$6.50	—
September, —	\$1.85	\$3.50	\$6.50	—

## BLACK RASPBERRY

	12	25	50	100
Cumberland				
2-yr. heavy	6	\$2.25	\$4.00	\$7.50
SODUS	1.85	3.50	6.50	



Latham Raspberries.



Red Rich® is big, solid and firm all the way through. It ripens evenly and possesses an abundance of natural sugar. Ideal for freezing—and best of all it won't mush up when thawed. Don't lose a year with this amazing Strawberry. Plant this spring.

## BRILLIANT Plant Patent No. 1183)

bright, glossy berries about sixty days after planting and keeps right on producing 'til fall. Often called the Super-Bearer, Brilliant is a bright, glistening berry sure to please you with its outstanding production of big crops during months when most strawberries are out a fond June memory.

**SCARLET GEM**—Does best of any around here. It sets abundance of new plants the first summer which fruit until frost. Good size and color; rich fine flavor.

**WAYZATA**—Fruit is bright red and quality high. Large thrifty plants with abundance of berries. A commercial money-maker.

## SUPERFECTION (Everbearing)

Newest everbearer from Michigan. A vigorous grower that will do very well most any place. Good producer of uniformly large fruit. We much prefer it to Gem.

## 20th Century

An outstanding everbearer that is highly recommended by Experiment Stations in many states. Second only to Red Rich, it rates very high in size, quality and vigor. The berries are bright red, of fine texture and excellent flavor.

## SUPERFECTION



May 1954

DURHAM or SEPTEMBER -Two N.Y. Station Everbearing-Raspberries-Very Early. Jasper, Minn.

Dear Sir; Many thanks for sending me the lovely strawberry plants. Mrs. W.H. Rt.2

## STRAWBERRIES

### JUNE BEARING

**SENATOR DUNLAP**- Berries medium to large; conical dark crimson with red flesh. Most hardy. The most popular canning variety.

**JUMBO** (Trade Mark) (Midseason)—Our choice for the All American June bearing. Jumbo has everything—everything the home gardener and commercial grower demand in an all-purpose strawberry. It is deep red all the way through and chock-full of real honey-sweet goodness. Berries are firm and solid for shipping and handling. In actual freezing tests Jumbo rated superior and records prove that it is one of the heaviest yielding strawberries known. Chances are—Jumbo will soon be your favorite.

### VERMILION (June-bearing)

Vermilion has undergone extensive testing and has passed with flying colors. Rates with the best in quality, production and freezing quality. Berries are medium large and a glossy red. Resistant to red stele and leaf spot.

### WISCONSIN No. 214 (June-bearing)

Here's a rare one that we think will become a favorite. An extra big, full bodied berry that rates tops for freezing. Brilliant red—a good producer.

**CRIMSON FLASH** (Pat. Applied For) Brand New Junebearing-Strawberry that is tops in every way. Plants are very limited this year.

West Hartford, Connecticut  
Gentlemen; Mrs. Ph.S. of Katonak, N.Y. has recommended you to us very highly and has sent us your catalogue. She says that your strawberries are wonderful. xxx Mrs. P.H.

### BLUEBERRY OFFER

Because the plants are not self-fertile, we give you this special combination offer of three varieties:

- |                                       |   |
|---------------------------------------|---|
| ✓ 1 Rancocas. 12-18 in., 3-yr. plant. | } 1 each of all three,<br><b>\$3.95</b> |
| ✓ 1 Rubel. 12-18 in., 3-yr. plant.    |   |
| ✓ 1 Jersey. 12-18 in., 3-yr. plant.   |   |

Shipped with 1 lb. Aluminum Sulphate

**RANCOCAS.** Early **RUBEL.** Midseason.  
**JERSEY.** Late.

**FREE.** With each order of three plants, you will receive 1 pound of aluminum sulphate

## CLEMATIS VINES



**PRESIDENT**—blue



**HENRYI**—white



**EDOUARD ANDRE.**

—red

### PRICES OF Clematis, Each \$1.25

**CLEMATIS** (Large flowering Jackmanni)—Large rich purple flowers all summer. Plant on south or east exposure.

**BARON VEILLARD**—Lav. pink.

**Mme Edw. ANDRE**—Red.....

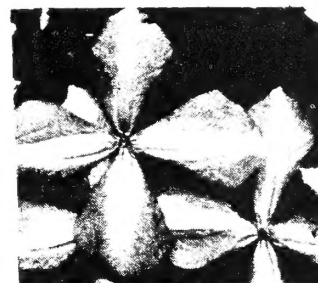
**HENRYI**—White.....

**THE PRESIDENT**—Deep Blue.

### PRICES OF Clematis, Each \$1.25

**ERECTA-SMALL** hardy white.

75¢ each; 3 for ...\$1.95



**JACKMANNI**—purple

### VINES

**AMERICAN IVY** Virginia creeper—Fastest growing vine for twining on trellises, screen porches, or fences. Fall foliage coloring. Each,

**50c**

**ENGLEMAN CREEPER** (Ampelopsis englemanni) Sticks to stone, stucco, brick without aid. 5 whorl leaves with autumn coloring. Each,

**50c**

**BITTERSWEET**—Native twining plant with orange berries; red inside. Fine for winter decoration.

**\$0.75**

**Ivy, Boston** The small overlapping leaves are held close to the wall to form a tight screen. The dark green leaves turn a fine shade of red in autumn.

**\$1.00**

**SCARLET TRUMPET HONEYSUCKLE**—(New everblooming variety) Trumpets of flame-red outside and golden yellow inside. Very fragrant. Each,

**\$1.00**



**TRUMPET HONEYSUCKLE**

### VINES

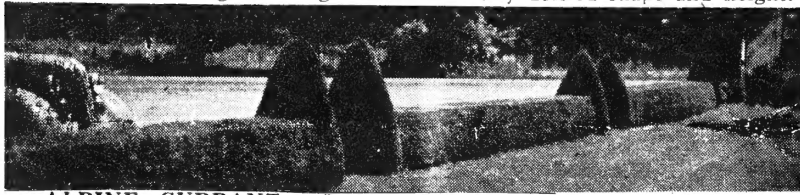
Bemidji, Minn. April 54  
Dear Sirs; Send catalog. F.A. at florist shop recommended you to me. She said she was always pleased with plants & shrubs from your nursery.

Mrs. H.A.J

# 50 Evergreen Hedge \$5.00

3-year Seedling AMERICAN ARBORVITAE

Start now with these 5 to 10 inch sturdy seedlings, and have an outstandingly beautiful evergreen hedge. Shear it at any desired shape and height.



**ALPINE CURRANT**—Grows 6 ft. high. Most ideal shrubs for hedge trimmed one foot high or so, or as border hedge. Small green leaves.

**BARBERRY Japanese Green Leaf**—Grows 4-5 ft. high. Dark green leaves, red winter berries; thorny branches. Beautiful fall foliage color.

**BARBERRY RED LEAF** — Grows 3-4 ft. high. Bright maroon foliage all summer, bright red in fall; red berries all winter. An important contrast foliage plant.

**BUCKTHORN Common (Catharticus)** Grows 10-12 ft. A sturdy hedge for the north. Thick glossy green leaves, black berries for birds, prickly branches stop intruders.

**CARAGANA Arboresens (Siberian Pea Tree)** Drought resistant, rabbit-proof hedge or windbreak plant. Yellow sweet pea-shaped flowers in May followed by pea pods. Plant 10 to 12 inches apart as hedge; 3 feet as screen or snow-catch.

**CARAGANA Pigmaea (Good dwarf hedge)** 3-5 feet. Light green prickly foliage; prickly branches. Showy golden yellow flowers in May. Slow growing; saves trimming.

**COTONEASTER Peking (acutifolia)** Grows 10-12 ft. high. The best hardy hedge for the north. Soft and easy to trim; makes a square hedge thick to the ground. Shiny dark green leaves with bright fall coloring. Small pink flowers and showy black berries for the birds.

**CRANBERRY** — High bush (*Viburnum opulus*) Grows 8-10 ft. A native shrub with white flowers in May followed by scarlet berries hanging until picked. Makes perfect jelly.

**DOGWOOD Red Barked** — 8-12 feet. White flowers and white berries. Plant for winter effect.



Variegated Dogwood

**DOGWOOD Variegated**—6-8 feet. Each leaf has silver edging. Showy red bark in winter.

**ELDER Golden**—6 ft. Rapid growing shrub with golden leaves for summer contrast.

## ZABELI HONEYSUCKLE

— The Beautiful Red Honeysuckle. Very compact, erect, well-formed bush maturing to 7 feet. Produces beautiful red flowers which are followed by brilliant red fruits in late summer. Very hardy.

**HONEYSUCKLE TARTARIAN** — 10-12 ft. Color varies from light pink, rose to red. Does well under all soil conditions. Fast grower. Deep pink, orange berries.



ALPINE CURRANT



Cotoneaster Hedge



Honeysuckle

# Flowering

## ★ HARDY HEDGES

50 at the 100 Rate

ALPINE CURRANT	Each	Per 3	10	100
*9-12 in. ....	\$.70	\$1.80	\$5.50	\$50.00

ALMOND See Prunus

BARBERRY, Red Leaf-

*12-18 in. ....	.50	1.45	4.50	40.00
15-18 in. shrub.	1.00	2.70	8.50	80.00

BARBERRY, Green Leaf-

*12-15 in. ....	.35	1.00	2.75	24.50
*15-18 in. shrub.	.60	1.50	4.50	40.00

BUCKTHORN Common-

*12-18 in. S... ..	.75	1.75	15.00	
*18-24 in. T... ..	.90	2.50	22.00	
* 2-3 ft. T... ....	1.20	3.00	28.00	

CARAGANA Arboresens-

(Siberian Pea Tree Shrub)

*12-18 inch ... ..	....	1.00	6.00	
*18-24 inch ... ..	....	1.25	9.00	
* 2-3 feet ... ..	.60	1.50	12.00	
* 2-3 feet Trppls..	.75	2.00	15.00	

Caragana Pigmaea Dwf.

*12-18 in. ....	1.00	2.70	7.50	65.00
-----------------	------	------	------	-------

COTONEASTER Peking-

*12-18 inch....	\$.40	1.00	3.00	28.00
*18-24 inch ...	.75	2.00	6.50	60.00
* 2-3 feet ...	1.00	2.40	7.50	70.00

DOGWOOD Baileyi Red-

*18-24 in. ....	.50	1.35	4.00	35.00
2-3 ft. ....	1.00	2.70	8.50	....

HONEYSUCKLE Zabel Red (Best)

* 12-18 inch... ..	1.00	2.75	25.00	
* 18-24 inch... ..	.50	1.35	3.50	30.00
18-24 inch... ..	.75	2.00	6.50	....
2-3 feet	1.00	2.85	9.00	....
3-4 feet	1.50	4.00	13.00	....

HONEYSUCKLE Tartarian Red-Rose-

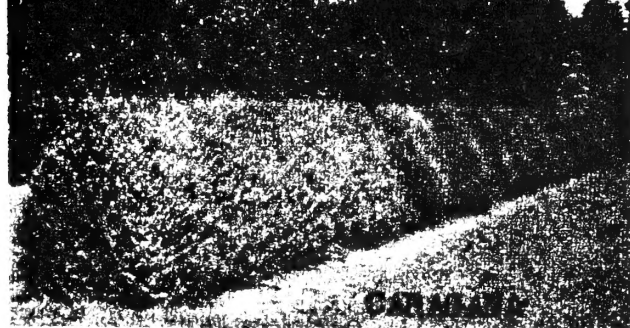
* 12-18 inch... ..	.75	2.25	20.00	
--------------------	-----	------	-------	--

HONEYSUCKLE Compacta Nana

18-24 inch...1.20	3.30	10.00	....	
-------------------	------	-------	------	--



# Shrubs



EACH Per 3 Per 10

CRANBERRY, High Bush Am.  
 12-18 in. .... .75 2.00 6.50  
 2-3 ft. .... 1.25 3.50 ....

DOGWOOD Variegated-  
 18-24 in. .... 1.25 3.70 11.00

GOLDEN ELDER-  
 2-3 ft. .... .90 2.40 ....

Siberian Elm Hedge

See Windbreak Page 16 2-3 ft. .... .90 2.40 ....  
 EACH Per 3 Per 10

HAZELNUT- Edible.  
 18-24 in. .... \$1.55 \$3.75 \$12.00

HYDRANGEA, P.G. or Arbor.  
 18-24 in. ... \$1.25 \$3.60 \$11.50

LILAC Persian -  
 \*12-18 in. ... .40 1.00 3.00

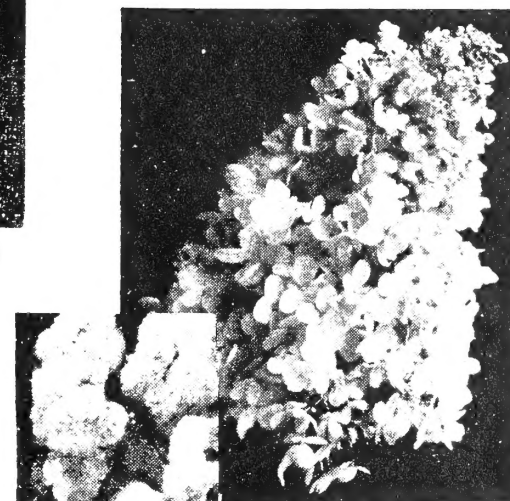
LILAC Chinese Red (Rothomagensis)  
 12-18 in. ... .70 2.00 6.50  
 18-24 in. ... .95 2.70 8.00  
 2-3 ft. ... 1.25 3.60 11.00  
 3-4 ft. ... 1.50 4.20 14.00

LILACS, FRENCH HYBRIDS  
 Alphonse LaValle-Double Blue.  
 Belle De Nancy- Double pink.  
 Chas. Joly- Double Purple.  
 Chas. X - Single showy red.  
 MADAME LeMoine-Double white.  
 Michael Buchner- Double Pink.  
 Pres. Grevy- Dbl. lilac blue .  
 2-3 ft. (above) 1.75 \$4.80 15.00

LILAC Canadian Hybrids (Villosa Types) Asst. shades  
 2-3 ft. (1. of Each) 4.00 ....

MAY DAY TREE (Prunus padus)  
 2-3 ft. .... 1.25 3.60 11.50

MAPLE GINNALI (Amur)  
 \*12-18 inch .50 1.35 3.50  
 18-24 inch .75 2.00 6.00  
 2-3 feet 1.00 2.70 8.00

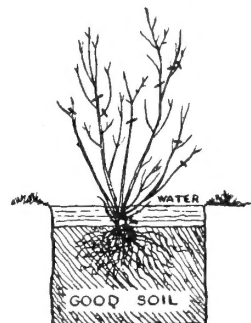


Hydrangea A.G.

Hydrangea P. G.

HYDRANGEA PeeGee 4-6 ft. Large trusses of showy white flowers blending into pink and bronze shades in autumn. Flowers July to Oct. Everlasting if cut fresh and dried.

HYDRANGEA ARBORESENS (Snowhill) 3-5 ft. A real hardy shrub with very large white flower corymbs in July. Does well in partial shade.



Correctly Planted Shrub



French Lilacs

## LILACS

LILAC Persian purple — 8-10 ft. Does not sucker from the root. Handsome foliage, lilac flowers.

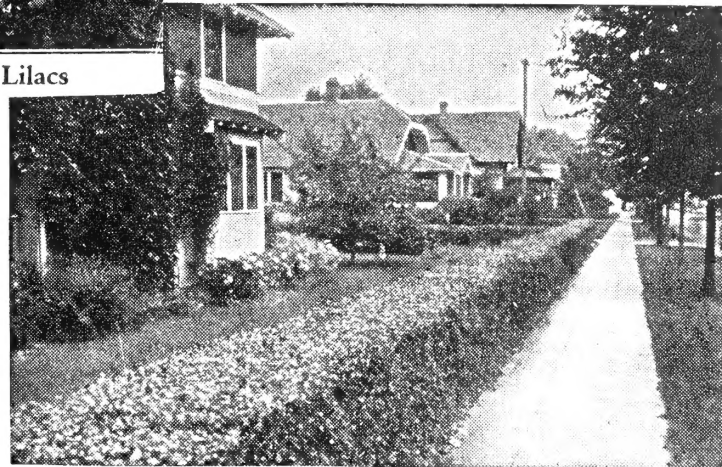
LILAC Chinese Red Persian (Rothomagensis) This is an outstanding reddish lilac that surpasses regular Persian in color. Foliage and characteristics the same.

LILAC French Hybrids — Grow 12-15 ft. high. No lilacs give such variety of color.

LILAC VILLOSA (late lilac). Grows 8-10 ft. high. Blooms at same time as Hungarian but with pale pink flowers followed by showy seed pods. Heavy.

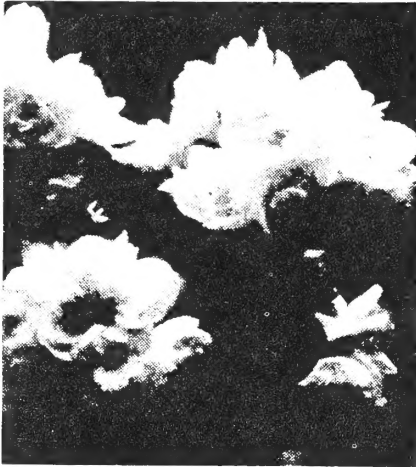
MAY DAY TREE See Prunus.

MAPLE GINNALI (Amur maple) 18-25 ft. Interesting maple leaves with bright fall colors. Yellow flowers and attractive red seed pods. Good background shrub.



LILAC Persian purple BEST HEDGING  
 12-18 in. 50 for \$12.50

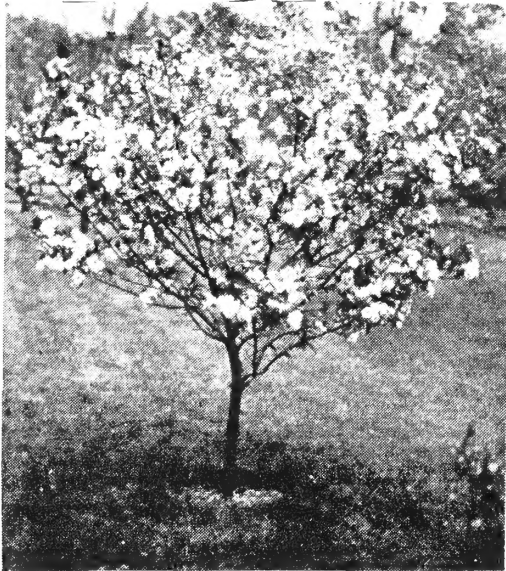
## SNOWFLAKE



## MOCKORANGE,

Large clusters of white flowers with golden stamens. Bloom freely in June and July, and occasionally thereafter. Attains a height of 5 to 6 ft. at maturity. Does well in sun or part shade. Single flowers on 1-year wood and double flowers on 2-year wood. Supply your own "bridal bouquets" with this wonderful shrub

**MOCK ORANGE** Virginal 6-8 ft. A medium grower with masses of double and semi-double fragrant white flowers in June and periodically all summer and fall. A great shrub for the right place.



Rose Tree of China

**PRUNUS TRILOBA** (Flowering Plum or Almond) 8-10 ft. Handsome shrub or small tree that surpasses all shrubs in beauty of bloom. Double rose flowers along the stems in May.

**PRUNUS Cistena** (Hanson's Purple Leaved Plum) 5-6 ft. Bushy shrub with rich purple foliage all summer.

**PRUNUS** May Day Tree (Virginiana hybrid) A tall shrub-tree with long fragrant white flower panicles, black berries.

**SIBERIAN ALMOND**—( **PRUNUS** ). 3 feet. A hardy shrub covered with bright pink flowers before anything else is in bloom in May. Try it.

FLOWERING LANDSCAPE  
SHRUBS

EACH Per 3 Per 10

<b>MOCKORANGE</b> Frosty Morn-New Dwarf.			
Grows 3-4ft. Fragrant dbl.white.			
18-24 inch	1.50	4.20	13.00
<b>MOCKORANGE</b> Virginal-			
2-3 ft. ...	1.00	2.70	8.00
<b>MOCKORANGE</b> Minn.Snowflake-			
2-3 ft. ...	1.50	3.75	12.50
3-4 ft. ...	2.00	5.00	17.50



SPIREA Anthony Waterer

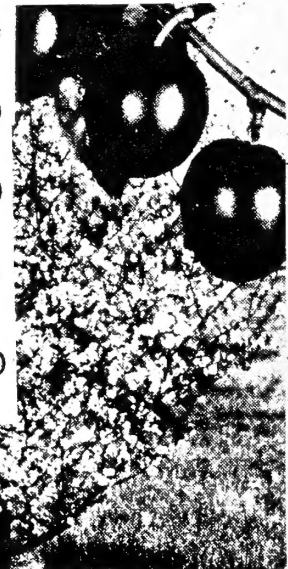
EACH Per 3 Per 10

<b>NENEBARK</b> Green Dwarf			
*12-18 inch	.35	1.00	2.50
2-3 ft. ...	1.00	2.70	8.50
<b>NINEBARK</b> Golden-			
2-3 ft. ...	1.25	3.00	9.50
<b>POTENTILLA</b> Fruticosa (Goldrop)			
Cinquefoil-15"	.85	2.25	7.00
18-24 in. ..	1.00	2.90	9.00
<b>PRUNUS</b> Cistena-Purple Plum-			
18-24 inch	1.30	3.75	11.50
2-3 feet	1.60	4.50	14.00
<b>PRUNUS</b> Newport-			
2-3 ft.	1.60	4.50	14.00
<b>PRUNUS</b> Triloba (Dbl.Fl.Plum)			
2-3 ft. ...	1.60	4.50	14.00
<b>PRUNUS</b> Tomentosa (Nanking Cherry)			
2-3 ft.....	1.50	4.00	12.50
<b>SIBERIAN ALMOND</b> (Dwarf Prunus)			
12-18 in. ...	1.00	2.70	8.00
<b>SNOWBERRY</b> Red or White-			
18-24 in. ....	.75	2.10	6.50



Spirea

Sorbifolia (Ash Leaf)



## BUSH CHERRY

**POTENTILLA** Fruticosa- (2')  
Goldrop or Cinquefoil-New,  
dwarf shrub with yellow  
flowers most of summer

**Nanking** (Prunus Tomentosa). The small, bright red fruits are borne in abundance along the branches. The profusion of pink flowers and brightly colored fruit make this Cherry an attractive ornamental shrub. The bushes reach a height of 5 to 7 feet.

# Shrubs

EACH Per 3 Per 10

SNOWBALL (*Viburnum opulus sterilis*)

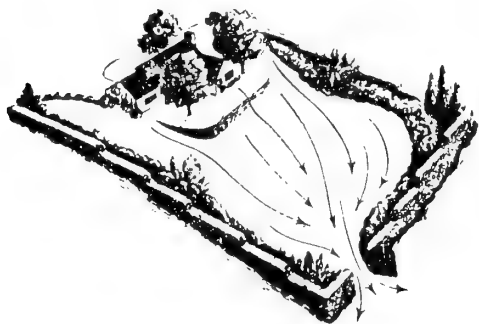
6-12 inch	.35	1.00	2.50
12-18 inch	.50	1.40	4.00
18-24 inch Heavy	1.00	2.90	9.00

## SPIREA FAMILY-

Ant. Water. 1-1½'	.75	2.00	6.50
Billardi 2-3'	.85	2.25	7.00
Golden (see Ninebark)			
Thunbergi 2-3'	1.00	2.70	8.50
VanHouttie (Bridal Wreath)			
*12-18 in Hedge	.35	1.00	2.50
(\$20.00 per 100)			
18-24 in .....	.50	1.25	4.00
2-3 ft. ....	.75	2.00	6.50
3-4 ft. ....	1.00	2.90	9.00
Ash Leaved ( <i>Sorbaria</i> )			
2-3 ft. ....	1.00	2.70	8.50
SUMAC Cut Leaf-			
2-3ft .....	1.00	2.70	8.50
SUMAC Common-			
2-3 ft. ....	.75	2.00	....
TAMARIX Pink <i>Hespida</i> -			
2-3 ft. ....	.90	2.40	....
WAHOO <i>Euonymus</i> -			
12-18 in. ....	.75	2.25	....
18-24 in. ....	1.25	3.50	11.00
WAYFARING TREE ( <i>Viburnum Lantana</i> )			
12-18 inch	.50	1.40	4.00
18-24 inch	.85	2.00	7.00

RUSSIAN OLIVE (*Elaeagnus Angustifolia*) 12-18 ft. Silver leaves and white coated berries. Use as hedge, windbreak, snow-catch or background landscape shrub for backyard

CONTROL YOUR CLIMATE — Proper planting of hedges, trees and vines can change the temperature of your home 20° to 30° both summer and winter.



SPIREA Billardi—

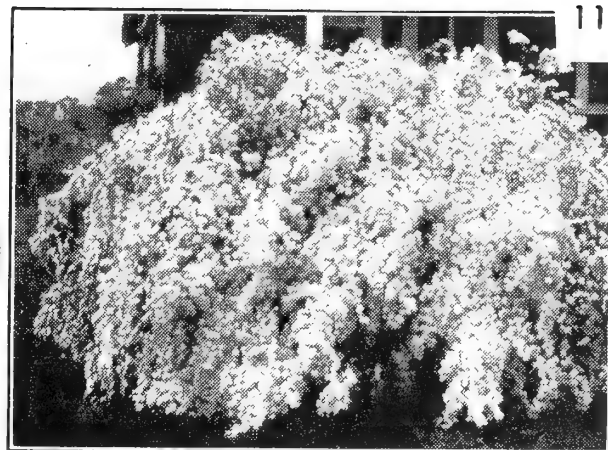


SNOWBALL



Blooming Tamarix

TAMARIX—*Hespida* (Silver sprays) 6-10 ft. Feathery silver foliage; bright pink flowers in June-July.



Bridal Wreath

## SPIREAS

SPIREA *Arguta* (Snow Garland) 5-6 ft. Pure white flowers along upper stems one week before common Van Houtte. Graceful, fine foliage.

SPIREA *Anthony Waterer* — 2-3 ft. high. Red flower heads from June to September.

SPIREA *Ash Leaved* (*Sorbaria Sorbifolia*) 5-6 ft. Grows in shady places. Earliest to leaf out with bright foliage. White flower spikes in later June. Suckers.

SPIREA *Billardi*—5-6 feet. Pink flowers in spikes July-August, again in fall. Give plenty water.

SPIREA *Froebel*—3-4 feet. Pink flower heads in June-July. Hardy vigorous grower. Similar to above variety.

GOLDEN SPIREA—See Ninebark

SPIREA *Thunbergi* (*Fernleaf*) 4-6 ft. Early white blooming with *Arguta*. Very soft looking shrub.

SPIREA VAN HOUTTEI (Common white called BRIDAL WREATH) Grows 6-7 feet high. One of most graceful shrubs grown. Covered by white flowers in June with branches hanging to the ground.

SUMAC (Native) Bright fall coloring.

SNOWBALL (*Viburnum opulis sterilis*) 8-10 feet. Large double round white flowers in June or May.

VIBURNUM *Lantana* (*Wayfaring tree*) 10-15 ft. Upright growing shrub with thick dark green leaves that hang on late. White flowers in corymbs followed by red berries, ripening black.

WAHOO *Euonymus* (6') A grey barked shrub with showy fruit like Bittersweet.

Wheaton, Minn.

Dear Sirs; Send 50 Berry Boxes. My shrubs which I ordered from you look real nice. Mrs. E.C

# RUGOSA HYBRIDS

2-yr No. 1 plants, \$1.25 each

HARDY MINNESOTA ROSES

Grow into landscape shrubs

**AUSTRIAN COPPER**- Orange red rose inside; yellow outside.  
**AMELIA GRAVEREAUX**- Long stem roses like H. Teas. 100% hardy.  
**BELLE POITEVINE**- Pink Hansa.  
**F.J. GROOTENDORST**- Dbl. bright red roses in clusters. They bloom most of summer growing to height of 3 ft. 2yr. \$1.25  
 Heavy 2-3ft. shrubs ea. \$1.75

HANSA SHRUB ROSE

Hansa grows 5-6ft. high with violet-red double roses clustered on shrub most of the summer, mostly June & Sept. 2 yr. \$1.25; 2-3ft. ea. \$1.50

**HARRISON YELLOW**- It grows 4 to 6ft. high. Semi-dbl. golden yellow roses in June.

**SKY ROCKET**- Pointed buds that open to large single showy red flowers in clusters during June and July.

## NON-PATENTED HYBRID TEA ROSES

Each \$1.25; 3 for \$3.15;  
Doz. \$12.50.

### RED SHADES

**CRIMSON GLORY**- Velvety crimson  
**POINSETTIA**- Lg. dbl. scarlet.

### PINK SHADES

**PICTURE**- Double rose pink.  
**THE DOCTOR**- Satiny pink. Large

### WHITE SHADES

**FRAU KARL DRUSCHKI**- Lg. white.

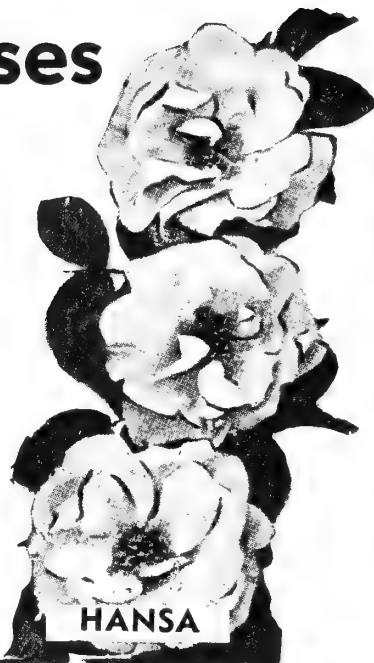
### YELLOW SHADES

**GOLDEN RAPTURE**- Clear yellow.

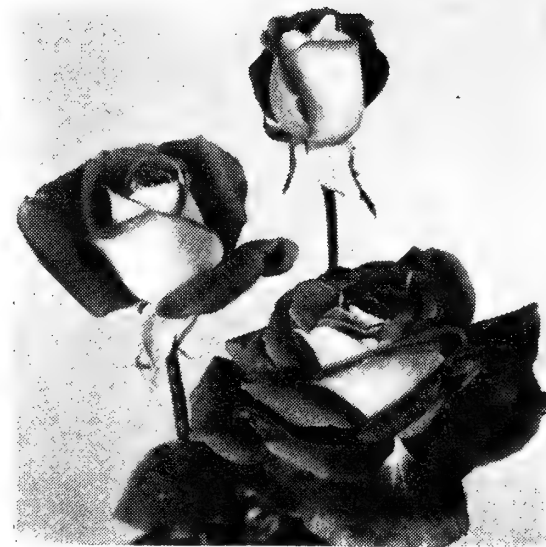
### TWO-TONE SHADES

**FRES. HOOVER**- Pink, scarlet, yellow.

# Roses



HANSA



FORTY NINER (1949):

# SUB-ZERO

## Beautiful Brownell Roses

Sub-zero hybrid teas from hardier species that bloom all summer, of great sturdiness and vigor, to survive sub-zero winters. Outstanding in every way.

\$1.75 each; 3 for \$5.00.

**CEDRIC ADAMS**. A new beautiful sturdy, lge double scarlet to carmine rose. Named after the commentator.

### - CURLY PINK

Large, massed, two-toned pink blossoms. Very hardy.

### - DICK WILCOX

Magnificent deep red rose, grows 2 ft. or more in height.

### - LILY PONS

White with yellow center, large, graceful, free bloomer.

### - SHADES OF AUTUMN

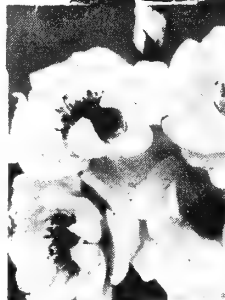
Bi-colored. Beautiful red, yellow and blush flower.

### - V FOR VICTORY

Large, very double, yellow, fragrant, constant bloomer.

### Queen O' The Lakes

Queen of Minnesota charming crimson queen of flowers. The queen Deep velvety of all the double reds.



CURLY PINK



Picture

# Climbing Roses

**EXCELSA**-Scarlet clusters \$1.00

**PAUL'S SCARLET**-Large ... 1.00

**NEW DAWN**-Everblooming pink

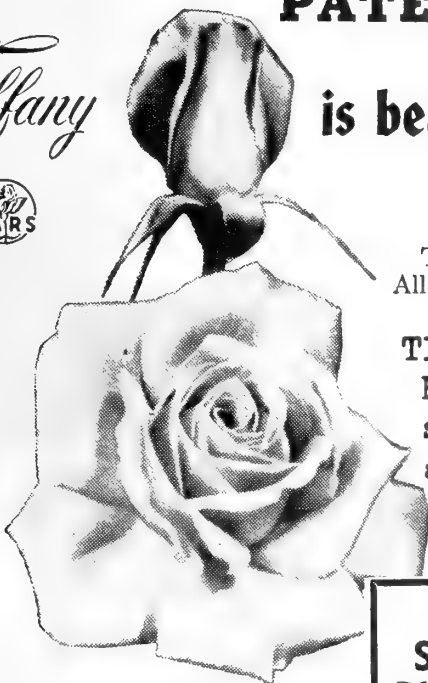
with old rose fragrance 1.45

**WHITE DAWN**-Dbl. pure white

everblooming. \$1.75

# PATENTED TEA ROSES

# Tiffany



## is beautiful... from bud through Full Bloom

TIFFANY, (hybrid tea) has won the coveted All-America Rose Selections award for 1955.

TIFFANY- \$3.00 Each. New 1955 Rose. Phlox Pink with yellow shading at base. Long stems and finest fragrance.

**For Spring Planting**

PATENTED HYBRID TEA ROSES

**BRAVO-** \$2.25. 3 or more \$2.00  
Brilliant cardinal red.

**CHRYSLER IMPERIAL-** \$2.50 each  
3 or more \$2.20 Each. Vivid rich tones of crimson. A red rose unmatched. Deep foliage.

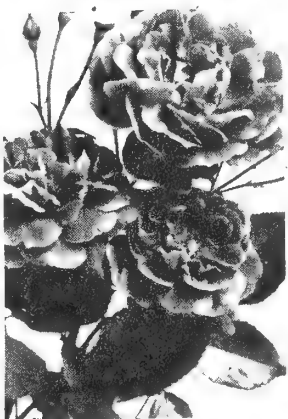
**FORTY-NINER-** \$2.50 Each; 3 or more \$2.20 Each. Bi-color. Inside petals vivid Orient-red outside Creme-Yel. Fragrant.

**FRED HOWARD-** \$2.50 Each; 3 or more \$2.20 Each; Long, rich-yellow buds tipped with a pink cast.

**HELEN TRAUBEL-** \$2.50 Each; 3 or more \$2.20 each. Light to apricot pink,



ROSE MOJAVE  
AAIRS



MA PERKINS  
Plant Pat. 1143  
\$2.00 each;  
3 for \$5.25



PEACE.

**LOWELL THOMAS-** \$2.00 Each; 3 or more \$1.75 Each. Large and double of lasting clear Canary Yellow.

**MOJAVE-** \$2.75 Each; 3 or more \$2.40 Each. Color blend of Salmon, apricot & orange. In cool weather salmon changes to red.

**PEACE-** \$2.50 Each; 3 or more, \$2.20 Each. Ovoid buds are a golden-yellow etched with a pink cast. Changing to cream edged with apple-blossom pink. Fls. open to large 5 inches.

**ROSE OF FREEDOM-** \$2.00 Each. 3 or more \$1.75 each. Currant red blooms with a true Rose delightful fragrance. Each rose on long stems. Good.

**SUTTERS GOLD-** \$2.25 Each. 3 or more \$2.00 Each. Long pointed yellow bud, richly shaded with orange and red. Rich tea fragrance. Rich color.

## Lovely Floribundas

These super-polyantha roses are rapidly becoming popular and deservedly so. Hardier than hybrid teas and more resistant to disease, they are more free and persistent bloomers, many of the varieties are never without bloom throughout the season. Flowers come usually in clusters of large individual roses. Ideal for garden display and excellent for cutting



PLANT PAT. NO. 1209

**EMBERS-** \$2.25 ; 3 or more \$2.00  
Glowing, burning scarlet red.

# Lilibet

FLORIBUNDA ROSES

**LILIBET-** \$2.00; 3 or more \$1.75  
Light rose to soft dawn pink.

**MA PERKINS-** \$2.00; 3 or more \$1.75  
Suffusion of yellow in early bloom aging to coral pink.

**GOLDILOCKS-** \$1.50; 3 or more 1.30  
Rich golden. Hardy & vigorous.

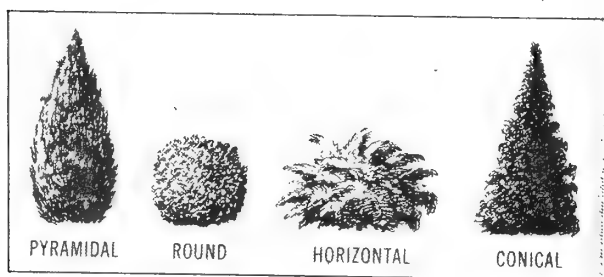
# EVERGREENS

PRICES OF EVERGREENS (Includes Balling and Burlapping)

Specimens	12-15"	15-18"	1½-2'	2-2½'	2½-3'	3-3½'	3½-4'			
<b>ARBORVITAE</b>										
American	\$ ...	\$4.50	\$5.50	\$	\$	\$	.....			
Globe.....	3.00	4.50	6.50	.....	.....	.....	.....			
Pyramidal..	2.50	3.50	4.95	6.00	7.50	9.00	12.00			
Siberian...	2.50	4.50	6.50	8.50	10.00	.....	.....			
<b>BALSAM FIR</b>	.....	.....	.....	7.00	7.50	.....	.....			
<b>JUNIPER Bush</b>										
ANDORRA....	2.50	.....	7.50	.....	.....	.....	.....			
Pfitzer. . .	.....	7.50	.....	.....	.....	.....	.....			
Hetzi.....	.....	.....	9.00	.....	.....	.....	.....			
Savin.....	4.50	6.00	7.50	9.00	.....	.....	.....			
<b>JUNIPER Upright</b>								<b>BLACK HILLS SPRUCE</b>		
Dundee.....	.....	.....	5.00	9.00	11.50	12.50	13.50	3½-4'	4-4½'	4½-5'
Nevins Blue	.....	.....	.....	.....	.....	12.50	13.50	.....	.....	.....
Red Cedar. .	.....	4.50	5.50	7.00	8.50	10.00	12.50	14.00	17.50	.....
Marshall's Blue	.....	.....	.....	.....	.....	13.50	.....	.....	.....	.....
Welchi.Silver ...	.....	.....	.....	.....	11.50	.....	13.50	.....	.....	.....
<b>PINE</b>										
Mugho Dwarf..	7.50	8.95	9.95	.....	.....	.....	.....	.....	.....	.....
<b>SPRUCE</b>										
Black Hill-	2.95	3.95	4.95	7.50	9.00	12.00	14.00	15.50	17.50	.....
Colorado Blue ...	.....	5.00	.....	11.00	13.50	15.00	.....	.....	25.00	.....
<b>JAPANESE YEW</b>										
Spreading	3.50	10.50	.....	.....	.....	.....	.....	.....	.....	.....
Upright	.....	.....	.....	.....	.....	25.00	.....	.....	.....	.....



BLACK HILLS SPRUCE



PYRAMIDAL

ROUND

HORIZONTAL

CONICAL

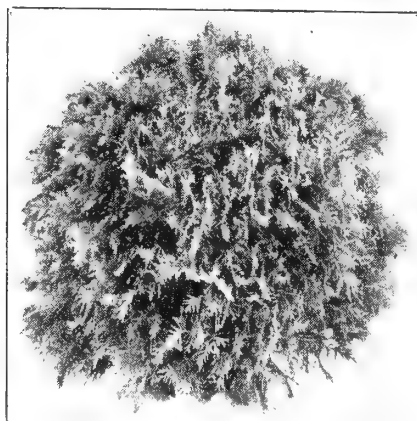
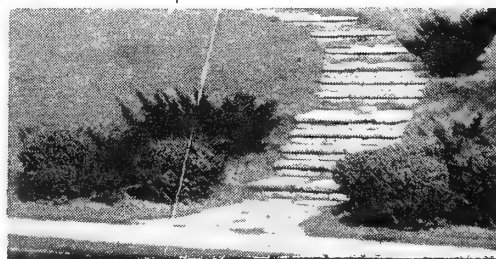
## ARBORVITAE

**AMERICAN ARBOR VITAE** - Grows 20-30 ft. high. Bright green flat foliage all winter and summer. Also can be trimmed as a hedge.

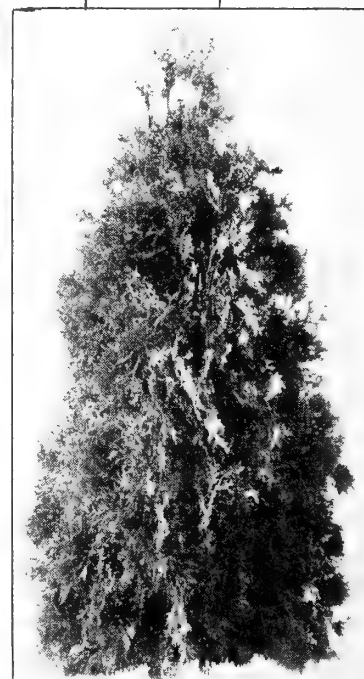
**ARBOR VITAE PYRAMIDAL** Grows 20-30 ft. if not kept trimmed. More narrow and upright than the American above and much more compact. The ideal tree under most conditions.

**SIBERIAN ARBOR VITAE** -- Woodward Globe- Grows globe shape; a dark green flat foliage. Hardy. Trimmed round.

**Globe Arbor Vitae.** 2½-3 ft. Naturally globe shaped. Useful in formal work.



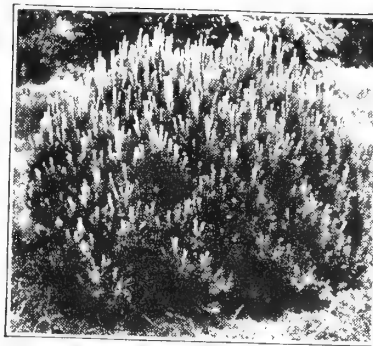
Globe Arborvitae.



Pyramidal Arborvitae.

# SPRUCE

**BLACK HILL SPRUCE** (*canadensis albertiana*). 40-50 ft. Very compact bushy tree. Foliage varies from green to silver blue-green.



DWARF MUGHO PINE-

## PINE

**DWARF MUGHO PINE** Should be trimmed every June; round or flat top. A hardy bright green bush for doorway planting.

**SCOTCH PINE** - (*Pinus sylvestris*) 60-70 ft. One of fastest growing and hardiest drought resistant. Good windbreak or lawn tree.

**PONDEROSA BULL PINE** (Western Yellow pine). Long needles; dark green foliage. Drought resistant.

**Pine, Norway.** A very fast grower desirable for group planting.

## JUNIPER

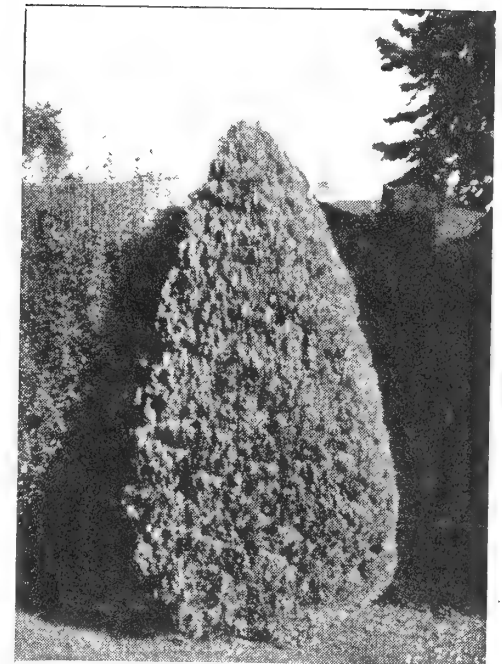
DWARF AND BUSH JUNIPERS

**JUNIPER ANDORRA** (*Communis depressa plumosa*). 2-ft. Spreads outward over large area. Silver green changing to plum color in winter.

**JUNIPER SAVIN**—Grows 2-3 ft. high and spreads out many feet. Can be trimmed. Best low Juniper for the north keeping good green color 2<sup>nd</sup> year.

**JUNIPER PFITZER** Similar to Savin but has blue-green prickly foliage.

**JUNIPER HETZI**—A silver-blue low growing bush Jun.



All PYRAMIDAL JUNIPERS can be trimmed to look like this—or less formal if desired.

PYRAMIDAL

**JUNIPER Virginiana** (Red Cedar) Should be trimmed at least once a year. Can be kept any height or shape by trimming. Used extensively in doorway plantings.

**JUNIPER Virginiana Pyramidiformis** (Dun-dee Juniper) Dark blue green during summer and plum purple during winter. Narrow form. Grafted trees in field.

**JUNIPER SCOPULORUM** Welchi. A very hardy pure silver pyramidal tree which holds its color all winter. Sells best in our nursery when seen.



COLORADO BLUE SPRUCE

**COLORADO BLUE SPRUCE**—Grows 50-75 feet high. Colors vary from green through blue-green to silver blue. The front lawn spruce or Christmas decorating tree.

## SHELTER BELT EVERGREENS

### PRICES OF SHELTER BELT EVERGREENS

S-Indicated Seedlings

T-Indicates Transplanted

ARBORVITAE

Each	Per 10	Per 25	Per 100
American...			
T- 6 to 9 inch	\$ 3.50	\$7.50	\$25.00
TT-9-to 12 in.	4.00	9.50	35.00

Each	Per 10	Per 25	Per 100
TTT-12-18 in	\$1.25	10.00	....

A. Pyramidal

Each	Per 10	Per 25	Per 100
T-9-12 in.	1.00	9.00	20.00
TT-12-18 in.	1.50	14.00	....

JUNIPER Red Cedar & Savin

Each	Per 10	Per 25	Per 100
TT 9-12 in.	.75	7.00	12.50
TT 12-18 in.	1.50	12.50	24.00

PINE Norway

Each	Per 10	Per 25	Per 100
T 4 - 6 in.	....	2.00	4.00
T 9-12 inch	.40	3.00	7.50
T 12-18 inch	.85	7.50	15.00

PINE - Each

Each	Per 10	Per 25	Per 100
Bull, Ponderosa Pine			
T-5-7" \$ .20	\$ 1.75	\$ 4.00	\$12.50
Scotch Pine	\$	\$	\$
T 8-10" .25	\$ 2.25	\$ 5.00	\$15.00
T 10-12" .30	2.60	6.00	20.00
T 12-14" .50	4.00	8.00	30.00

PINE Mugho

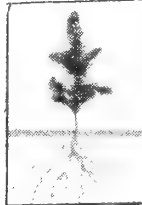
Each	Per 10	Per 25	Per 100
T 8-10" 1.00	9.00	....	....

SPRUCE, Black Hill

Each	Per 10	Per 25	Per 100
S-6-9 In...	2.00	4.50	12.50
T-6-9 " .35	3.00	6.95	24.95
TT-9-12" 1.00	6.50	15.50	55.00

SPRUCE, Colorado

Each	Per 10	Per 25	Per 100
S-6-9 In. ..	2.00	4.50	12.50
T-6-9 " .40	3.50	7.50	25.00
TT 9-12 "1.00	9.00	20.00	....



# WINDBREAK TREES

## WINDBREAK TREES & SNOWCATCH SHRUBS

50 at 100 Rate	Per 10	25	100	500
BASSWOOD (Linden)	\$2.25	\$5.00	\$16.00	...
18 to 24 inch	\$2.25	\$5.00	\$16.00	\$ ...
BLACK WALNUT				
12 to 18 inch	1.50	3.00	9.00	...
2 to 3 feet	7.50	12.50	30.00	...
BOXELDER				
12 to 18 inch	.75	1.30	4.50	20.00
CARAGANA See Shrubs-				
COTTONWOOD-				
2 to 3 feet Tpls.	.75	1.50	3.50	15.00
BIRCH White				
18 to 24 inch	2.50	5.50	20.00	....
ELM, American White				
1 to 1½ feet	.75	1.20	3.50	15.00
2 to 3 feet	1.50	2.50	8.00	34.00
3 to 4 feet	2.50	5.00	15.00	60.00
ELM, Harbin (Manchurian)				
2 to 3 feet	6.00	12.50	45.00	....
ELM, Siberian (Chinese)				
1 to 1½ ft.	...	1.50	4.50	18.00
2 to 3 ft. tpls.	1.50	3.00	10.00	40.00
3 to 4 ft. tpls.	2.00	4.50	12.50	....
4 to 5 ft. tpls.	5.00	10.00	35.00	....
GREEN ASH-				
1 to 1½ ft.	.75	1.20	3.50	15.00
2 to 3 ft. tpls.	1.50	2.50	8.00	34.00
3 to 4 ft. tpls	1.75	3.00	10.50	....
MAPLE Soft (Silver)				
1½ to 2 ft.	1.50	2.50	7.50	32.00
2 to 3 ft.	2.00	4.00	12.50	....
MAPLE Ginnali				
1 to 1½ ft.	3.50	6.00	20.00	....
POPLAR Norway- Cuttings	....	1.00	....	....
2 to 3 ft. trees	...	2.50	9.00	....
WILLOW Golden Cuttings	....	1.00	....	....
1½ to 2 ft. trees	...	2.00	7.50	....
W.Laurel Leaf-2ft.	..	2.00	7.50	....
RUSSIAN OLIVE				
1½ to 2 ft.	1.50	3.00	10.00	18.00
2 to 3 ft. heavy	2.50	5.00	12.50	....

# SHADE and

BASSWOOD (American Linden) 60-90 feet. Large round glossy leaves, smooth straight trunk.

Large leaves.	EACH	Per 10
18-24 inch	\$.25	\$2.25
4-5 feet	1.90	17.50

BLACK WALNUT (juglans nigra) 80-100 ft. Makes a stately tree. Edible nuts and valuable wood.

12-18 inch	.25	1.50
2-3 feet	.80	7.50
4-5 feet	1.00	9.00

BUTTERNUT-2-3ft. Each 75¢



BIRCH American White

Weeping Birch.

## The Birches

### AMERICAN WHITE-30-40'

	EACH	Per 3	Per 10
2-3 ft.	\$.40	\$1.00	\$ 2.80
3-4 ft.	.60	1.60	5.00
4-5 ft.	1.85	5.00	16.50
5-6 ft.	2.25	6.40	20.00

Plant 3 or more in 1 hole for group or clumps.

### BIRCH Cut Leaf Weeping-40'

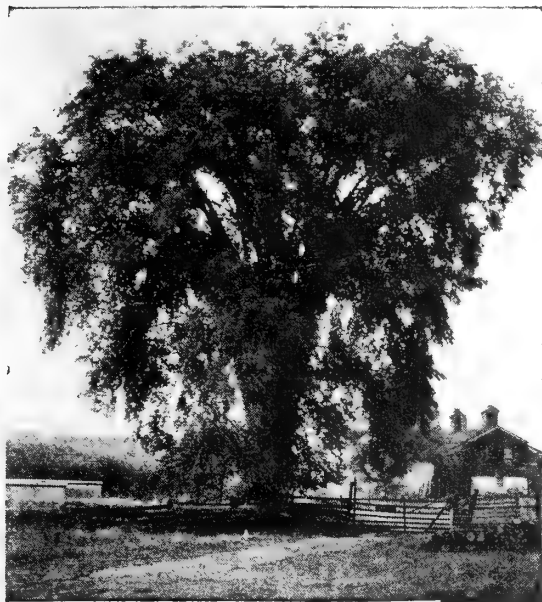
White bark	EACH	Per 10
3-4 feet	\$2.85	\$27.50
4-5 feet	3.60	33.00
5-6 feet	4.50	43.00
6-8 feet	6.50	....
8-10 feet	10.00	....

BIRCH Cut, Leaf Weeping - Grows 30-40 ft. high. Graceful white barked tree with finely cut leaves and branches drooping to the ground.

BIRCH American White 30 to 40 feet high. A beautiful shapely white barked tree.



# ORNAMENTAL TREES



American Elm

## The ELMS

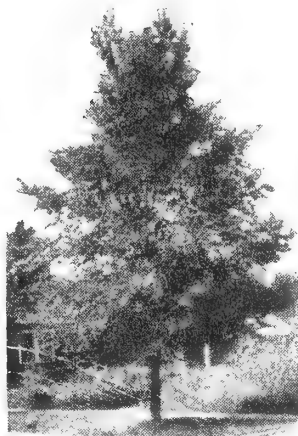
**AMERICAN WHITE ELM-60-100'**  
Best all around shade and Boulevard tree. Fast growth (smaller sizes WINDBREAK)

	EACH	Per 10
3 to 4 feet	\$ .35	\$2.50
4 - 5 feet	.75	7.00
5 - 6 feet	1.50	12.50
6 - 8 feet	2.50	23.50
8 - 10 feet	3.75	35.00

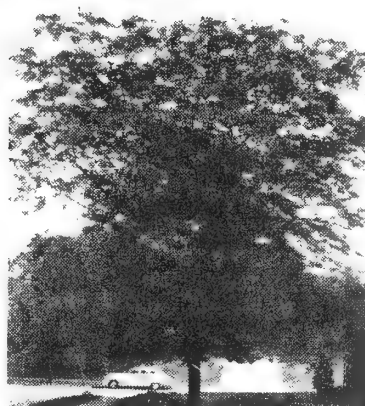
**NEW HARBIN ELM-40'** Hardy Canadian Siberian Elm.  
2-3 ft. 65¢ ea. 10 for \$5.

**LARCH European-40-50'**. Grows conical like spruce. Needles drop in fall. Graceful.  
12 inch trees 25¢ each .  
2 foot trees 75¢ each .

Sacred Heart, Minn. 6/7/54.  
---That special Horsechestnut tree (a wedding gift) is blooming now, a lovely tree and a welcome gift from them. Mrs T.E.



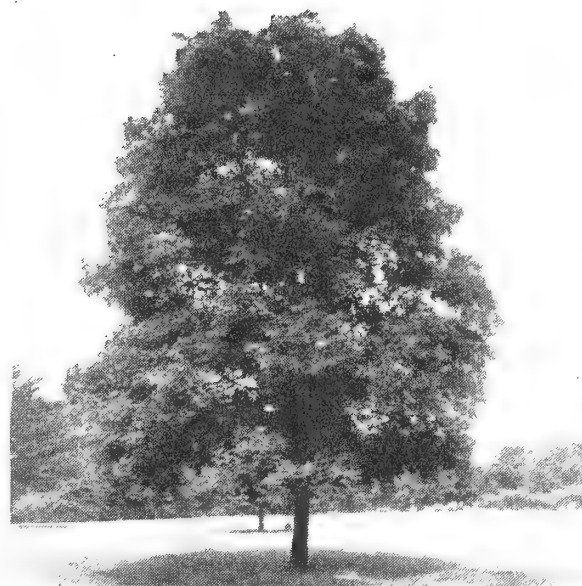
HARBIN ELM



MORaine LOCUST



EUROPEAN LARCH



**GREEN ASH-50-75'**. Very hardy shade or windbreak tree.

	Each	Per 10
4 to 5 feet	\$1.00	\$8.50
5 to 6 feet	1.50	12.50
6 to 8 feet	2.50	22.50

**HACKBERRY** 50 to 75 ft. A hardy dependable lawn or windbreak tree. Similar to the elm. Straight handsome trunk, beautiful round head.

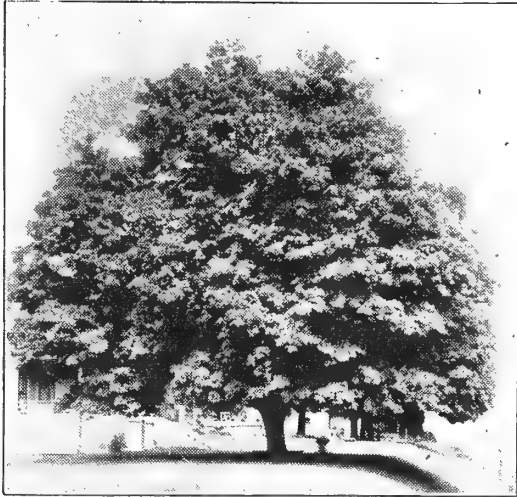
	Each	Per 10
2 to 3 feet	\$.30	\$2.50
3 to 4 feet	.50	3.50
5 to 6 feet	2.25	21.00
6 to 8 feet	3.75	36.00

**HONEYLOCUST Thornless-60 ft.**  
Exotic lvs. Long seed pods .  
2-3 ft. 40¢; 10 for \$2.50  
3-4 ft. 75¢; 10 for 6.50  
4-5 ft. \$1.50; 10 for 12.50

**HONEYLOCUST New Moraine-60ft.**  
Seedless. Fast growing lawn tree. Very attractive.  
5 to 6 ft. size Each \$5.00

**HORSECHESTNUT Ohio Buckeye .**  
30-40'-5 leaves in whorl. It fls. white . Attractive nuts.  
Very hardy; Each Per 10  
6 to 12 inch. \$.25 \$2.00  
12 - 18 inch .35 3.00  
2 to 3 feet 1.00 8.50

# TREES



Hard or Sugar Maple

## The Maples

CRIMSON KING (Pat. 735) 40ft.

Red leaves all summer.

5 to 6 ft. size Each \$4.95

6 to 7 ft. size ea. 6.50

AMUR or GINNALI See shrubs.

RUBRUM Red Maple-50 - 75ft.

Red leaves in fall only.

18 to 24 inch Each 50¢

2 to 3 feet Each 75¢

3 to 4 feet Each \$1.00

SUGAR or Hard Maple-50-75'.

Hardy native tree. The lvs.

turn yel. & red in fall. A

dense shade or blvd. tree.

Norway Each Per 10

1½ to 2 feet \$ .40 \$ 3.00

2 to 3 feet .50 4.50

3 to 4 feet 1.00 8.50

4 to 6 feet 3.00 ....

SCHWEDLERI MAPLE-40-50' -The

spring leaves-reddish .

5 to 6 feet each tpls \$2.50

6 to 7 feet each tpls 4.00

SOFT MAPLE (or Silver) 60-80'

Fastest growing hard wood

lawn or windbreak tree. Grey

bark. Lvs. silvery below.

4-5 ft. trees Each \$1.00

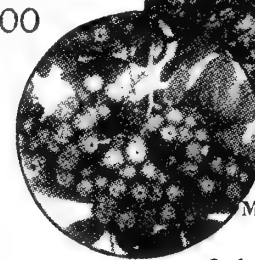
6-8 ft. trees Each 2.50

MOUNTAIN ASH (20-30') White fls  
with red berries in clusters in  
to winter

	Each	Per 10
2 to 3 ft.	\$.75	\$7.00
3-to 4 ft.	1.00	9.00
4 to 5 ft.	1.75	
5 to 6 ft.	2.50	
6 to 8 ft.	4.50	



MOUNTAIN ASH



## The Poplars

← BOLLEANA 50-60ft. A rapid  
growing columnar tree with  
grey-green bark. Shiny leaf  
with silver underneath.

	Each	Per 10
3 to 4 feet	\$ .85	\$7.50
4 to 5 feet	1.50	13.50
5 to 6 feet	1.90	17.00
6 to 8 feet	2.75	25.00

← LOMBARDY Poplar-60-80ft. A  
rapid growing narrow upright  
tree.

	EACH	Per 10
3 to 4 feet	\$ .40	\$2.50
4 to 5 feet	.75	6.50
5 to 6 feet	1.00	8.50
6 to 8 feet	1.50	12.50

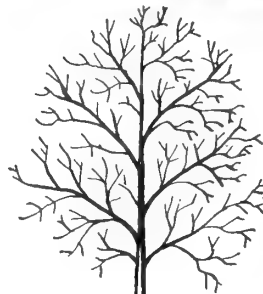
NORWAY Poplar-75-100 ft. Fast  
growing tree for windbreak ,  
or Cottage planting. Hardy.

6 to 8 ft. \$1.50; 10, \$12.50

See WINDBREAK Sizes.

SILVER Poplar-30-50' - Leaves  
are bright silver beneath &  
dark green on top. The trees  
make rustling sound.

	Each	Per 10
3 to 4 feet	\$ .75	\$6.50
4 to 5 feet	1.00	9.50
5 to 6 feet	1.40	12.50



RIGHT  
Allow Roots  
to Spread  
Naturally  
When  
Planting

WRONG  
Crowded  
Roots May  
Mean  
Failure



Chain Saws  
For felling,  
cutting, prun-  
ing, and other  
uses. 5 sizes  
and bow saw.



**BOLENS  
EQUIPMENT**



**RED OAK Rubrum-70-80'-Leaves deeply cut. Bright scarlet in fall.**

2-3 ft. Trees Each \$ .75  
 4-5 ft. Trees Each 3.75  
 5-6 ft. Trees Each 5.75

**OAK, RED**

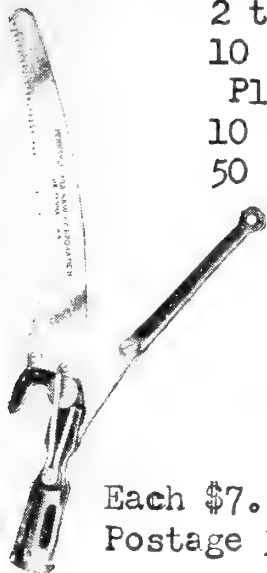
**NATIVE PLUM TREES**

Fine for pollenizing and makes a very fragrant screen.

2 to 3 ft. 2 for ..... 60¢  
 10 for \$2.75 Postpaid

Plum, Apple, Pear Seedlings

10 for \$1.75 Postpaid  
 50 for 7.50 Postpaid



Each \$7.50  
 Postage 35¢

**Pole Pruning Saw Shear and Hook**

For cutting branches up to 3/4 in. in diameter. 9 1/2 in. blade.

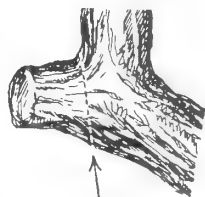


Fig. 5

Do not leave a stub when you cut off a branch. It will not heal over and decay will soon eat into and destroy the limb. Prevent this by cutting close as indicated by dotted line.

*The Willows*

**WILLOWS** Golden and Laurel Leaf — 30-40 ft. Fast growing snow-catch and windbreak. Yellow bark on golden and green bark on L. Leaf.

**WINDBREAK PAGE --16**



**Niobe Weeping Willow**

**WILLOW NIOBE GOLDEN WEEPING—** Grows 30-40 ft. high. A fast growing graceful weeping tree. Long shiny leaves, golden bark.

	Each	Per 10
3 to 4 feet	\$ .50	\$3.50
4 to 5 feet	.75	7.00
5 to 6 feet	1.50	12.50
6 to 8 feet	2.50	22.50

**STANDARD SHELTER BELT PLAN**  
 (Recommended by the University of Minnesota)  
**MODEL FARM WINDBREAK**

**Rows 1 and 2.** Siberian Pea Tree, Russian Olive, Honeysuckle, Laurel Leaf Willow, Arborvitae or Juniper.

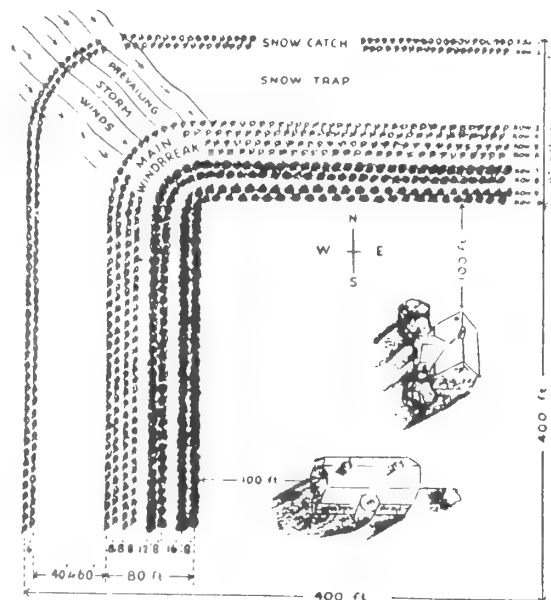
**Rows 3 and 5.** Niobe Willow, Golden Willow, Lombardy Poplar, or Chinese Elm.

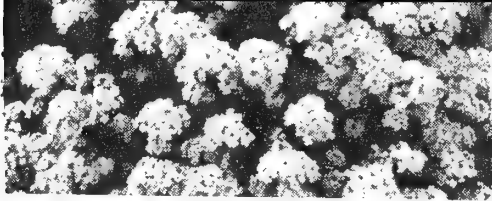
**Rows 4 and 6.** Green Ash, American Elm or Silver Maple.

**Rows 7 and 8.** Ponderosa Pine, Jack Pine, Norway Pine or White Pine.

**Rows 9 and 10.** Colorado Blue Spruce, Black Hills Spruce, Norway Spruce, White Spruce, Douglas Fir, Arborvitae or Juniper.

All trees and shrubs planted in the shelter belt should be staggered to fill up the gaps and thereby to more effectively check the wind. The spacing between rows is shown in the plan. These distances may be extended by 2 to 4 feet in the main windbreak (rows 3 to 10) if space is available. The trees or shrubs used in the snow catch (rows 1 and 2) should be planted 4 feet apart in the row; all other trees should be planted 6 feet apart in the row. The trees in rows 3 and 5 may be cut for fuel or posts whenever they begin to crowd the more hardy, long-lived trees in rows 4 and 6.





# Your Garden PERENNIALS

# Delphinium

## ALYSSUM SAXATILE

Orders over \$2.00 Postpaid. Including flower Roots and Bulbs in same shipment. For Flower orders less than \$2. add 25¢ unless part of a larger order.

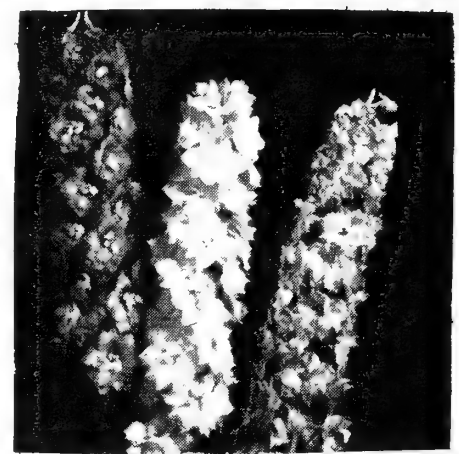
- 2 Year Field Grown. Each
- ALYSSUM Saxatile-(10-12")
- Bright yellow cushion. 25¢
- ASTERS Bloom in October.
- Nancy-(1') Dwarf Pink..40¢
- Snowspright (1')White 40¢
- Victor (9") Dwarf blue 40¢
- Blue Gem (4 ft)Clear 35¢
- Harrington(3') Pink 40¢
- Red Rover(3')Real red 50¢

QUANTITY FLOWER PRICES WHEN ORDERING 3 OR MORE OF ONE VARIETY.

EACH	Per 3	Per 6	Per 12
\$.25	\$ .70	\$1.30	\$ 2.50
.30	.85	1.50	2.90
.35	1.00	1.80	3.50
.40	1.10	2.15	4.00
.50	1.40	2.70	5.00
.75	2.10	4.00	7.50

## DELPHINIUM

**GOLD MEDAL HYBRIDS**  
 Colors range from a powder blue to royal velvet. Tall growing and very hardy. Mx. 2 yr. Field Grown.-- 3 for 50¢; 5 for 85¢ 15 Roots Mx. Colors Only \$2.25 Postpaid.



## GIANT PACIFIC HYBRIDS

- BLACK NIGHT—Darkest violet.
- BLUE BIRD—Med. blue, white bee.
- GALAHAD—Giant pure white.
- GUINEVERE—Lt. pink, white bee.
- KING ARTHUR—Violet, white bee.
- SUMMER SKIES—Lt. blue, white bee.
- ROUND TABLE—Mixed colors.

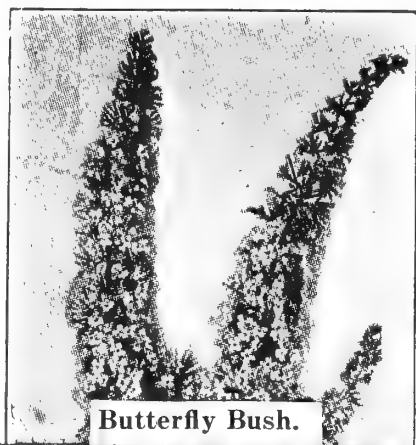
35¢ Each; 6 for \$1.80 Prepd.

## Aster COLLECTION

1 each of all 6 asters described, Only \$2.40

## BABY'S BREATH

- Bristol Fairy(2')Double 75¢
- Common (3') Single..... 25¢



Butterfly Bush.

**BUTTERFLY BUSH** Each 75¢  
 Called summer lilac. Really a shrub. Lilac-pink flower spikes durring summer(4')  
**BUTTERCUPS**

**RANUNCULUS**(1½') Small double golden fls. on slight stems June and July. Each... 25¢

## Carnations

**GRENADINE**(15") Double fragrant fls. Red or Mx.... 30¢



COREOPSIS Double



COREOPSIS

**COREOPSIS** (2') Golden yellow Daisy-like fls. all summer. Single 25¢ Double.....35¢



Bellflower (Double)

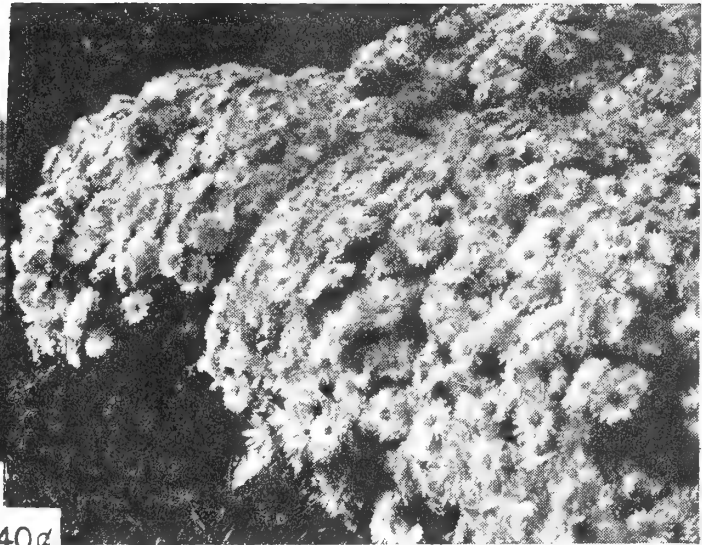
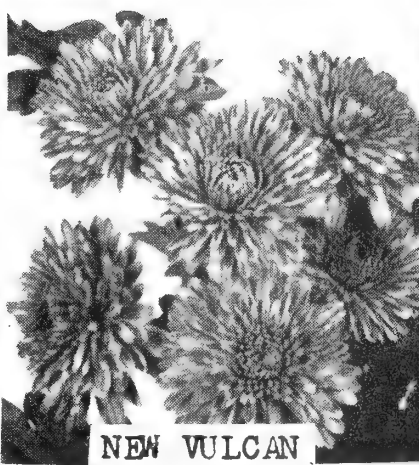
**CANTERBURY BELLS** (3') Double Cup and Saucer. Blue, pink, & White, .....25¢

## Bleeding Hearts

- BLEEDING HEARTS** (Dicentra spectabilis) Old-fashioned Bleeding Heart. Red heart flower for Decoration Day. clumps ..... Each. 75c
- Plumy Bleeding Heart (dicentra eximia) (RG) Finely cut foliage, rosy heart flowers most of summer. Each .....50c



**CUSHION MUMS**  
 Mounds of gorgeous blooms this year. Hardy, easy to grow 2 to 3 ft. across. 2 each, separately labeled. Red, Yellow, Bronze, White. **8 for \$2.45**



(C) Cushion Low Growing **NEW VULCAN**  
 6 for \$2.00; 12 for \$3.75 Postpaid

**RED SHADES** Each 40¢

- AUTUMN BEAUTY-Sept.4-Sparkling reddash-chestnut
- COURAGEOUS-Sept.26-Shining dark ruby-red
- DARK RED GOLD-Aug.20-Dark ruby pompon.
- ROUGE CUSHION-Sept 20-Brilliant bright red(C)
- VULCAN-Aug.-New U.Farm Mum.Solid red with large flowers and large plants.New for '55. Ea. 75¢

**ROSE TO PINK SHADES & LAVENDER**

- DAINTY-Aug.27-Lavender softening to silver.
- GLADNESS-Aug.28 (C)-Dwarf China Rose
- DR. LONGLEY-Aug.20- Double rose pink to lav.
- WENONA- Aug-New U.Farm Mum.Light Lavender. 75¢

**VIOLET ,PURPLES, & BRONZE**

- CHIPPEWA-Sept.4- Bright aster purple.
- HARVEST BRONZE-Aug.20-Rich apricot-bronze golden undertones. U.of.Minn.....50¢
- VIOLET-Aug.26-Dahlia-like purple.good flower.
- GEORGE LUXTON-Sept.12-New '55.Early soft bronze that last for 5 weeks. 3 1/2 inch flowers.EA, 65¢

**YELLOW AND GOLDEN**

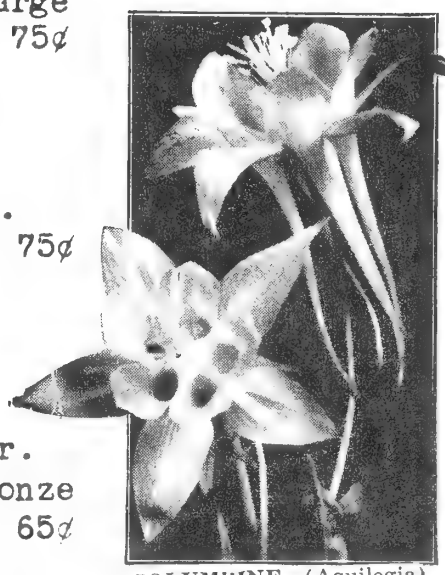
- CANARY-Sept.15-(C) Large,light yellow flw.mound.
- REAL GOLD-Sept.20-New '55. 3 1/2 in. true deep gold . Different from other yellows....Ea. 75¢
- YELLOW AVALANCHE-Sept.4-Brilliant soft yellow.
- RED GOLD-Aug.22-Golden orange-red.Very nice.

**WHITE & SHADES**

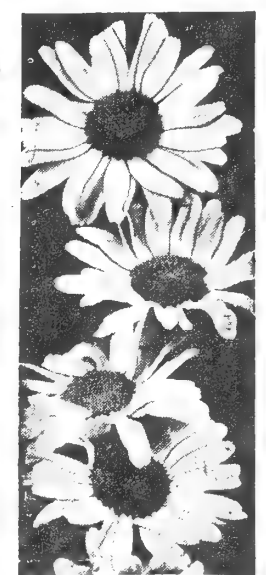
- GLAZIER-Aug.22- Earliest best white..
- AVALANCHE-Sept.4- Large full cream white
- NANOOK-Sept.14-(C)Mound of creamy white.

New York Mills, Minn. June 22, 1954  
 xxxall the perennials we purchased last year and this spring started just fine as did the Plums and Crabs. Mr. D.D.

**Chrysanthemum, Cushion**  
 FLOWER ORDERS OF \$2.00 or MORE POSTPAID. Including Glads and Dahlias.



COLUMBINE (Aquilegia)

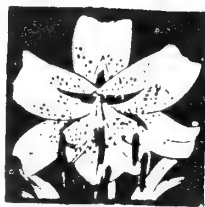


Shasta Daisies

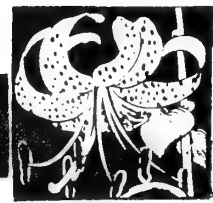
COLUMBINE (18") Long Spurred.  
 COLUMBINE (Aquilegia) Crimson Star-.30¢  
 Bright crimson with white corolla.  
 Rose, White, Yellow, Blue. 25¢

**Daisies**

- SHASTA Alaska(18")White fls. June and Sept. ....25¢
- SHASTA Double(15")White..30¢
- FALL DAISY(3-4')White showy clumps in Sept. ....25¢
- PAINTED DAISY(Pyrethrum 18") Fls. on slim stems for cut flowers.Red, or Pink....25¢



# Lilies



## HARDY FERNS

Lilium Regal

Plan now to plant these ferns that will fill in that shady nook, your wooded areas, north side exposures or shaded rock gardens. Hardy ferns are long lived and will last for years to come.

### HARDY FERNS

**CINNAMON** (30") Tall variety for foundation covering.

**MAIDENHAIR** (14") Fine leaves.

**OSTRICH** (3') Best all around, for sun or shade.

**LADY FERN** (2') Finely cut fronds. Moist rich soil.

30¢ Each. 3 for ..... 85¢

6 Asst. Roots Postpaid \$1.50

## Blue Flax

**FLAX** (16") Blue flowers all summer. Good foliage.....25¢

**FUNKIA** Plantain Lily (15") Wide light green lvs. and purple flowers in July. 25¢

**FORGET-ME-NOT** (12-18") Rich blue blooms. Likes moisture 25¢

**GAS PLANTS** (30") Large Pink or White fl. heads June and July. Shrub-like foliage. 50¢ each; 6 for \$2.70 Prepaid

**GAILLARDIA** (2') Orange-yellow, fls. all summer. Reseeds. 25¢

**GOLDEN GLOW** (7') Dbl. yellow 25¢

**HEMEROCALLIS** see Lilies.

**HEUCHERA** Carolbell (15") Pink fls. in umbels May-June 35¢

Red Carolbell..... 35¢

## DOUBLE

## HOLLYHOCKS

Scarlet, Rose, Maroon, Yel. 30¢

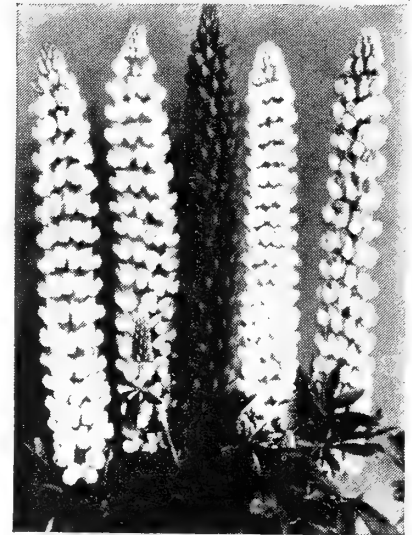
8 Roots All Colors \$2. prepd.

- CAROL LILY** (15") Miniature scarlet in June.. \$.25
- ELEGANS** (18") Orange red upright fls. in June. .30
- HENRYI** (3') Rich apricot-orange fls. in August. .70
- REGAL** (4') Fragrant white lilies in July .40
- SPECIOSUM RUBRUM** (3-4') Pink dots and shading of pink to carmine. Blooms in Sept. Large bulbs. .75
- TIGER** (3') Double, spotted orange red fls. Aug. .35

- LILY OF THE VALLEY** (8") White fls. For shade. .30
- HEMEROCALLIS** Day Lily (3') Iris type leaves.
- " **FULVA**- Red Center, lighter edge. Flws. July .50
- " **HYPERION**-Large 7" Yellow fls. in June.... .75



LYTHRUM



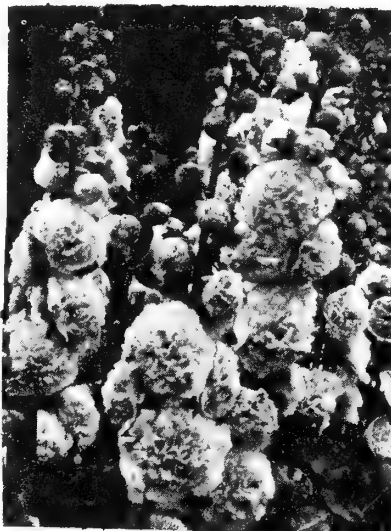
LUPINE ↑ EACH

**RUSSELL'S** (3') Blue, Red, and Yellow fl. spikes in June. 30¢

## Lythrum

**MORDENS PINK** (3') Pink flower sprays from ground up in June to August. Bushy plants make good foundation shrub. Fine cut flower. Each 50¢

**LYTHRUM GLEAM**-Carmine. 50¢



DOUBLE HOLLYHOCK

## MAYFLOWER

**ANEMONE** (Pasque Flower) (10") Native Crocus. Lav. fls. May Fls. 6" in May, 12" in June. Nice foliage. Each.....25¢

# HARDY PHLOX

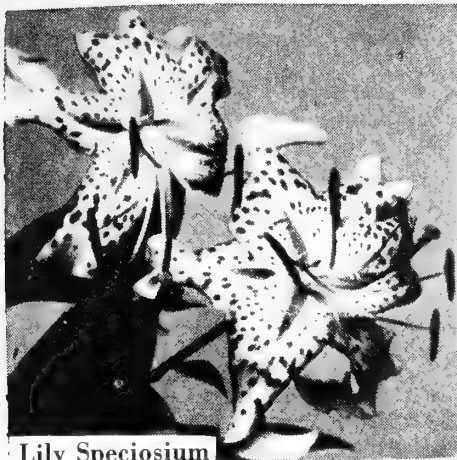
## Phlox Collection

- 1 White,
- 1 Purple
- 1 Red,
- 1 Pink
- 1 Two-Tone
- 1 Blue

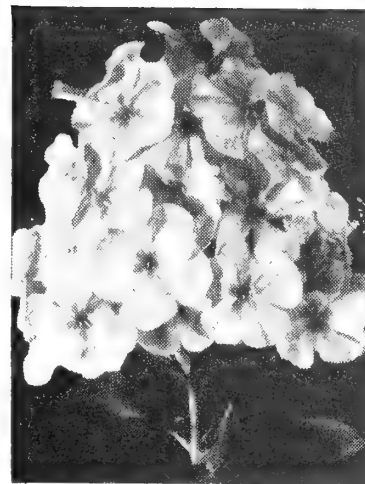
All 6 Plants

**Only \$1.95, Prepaid**

Collection of 12 \$3.50



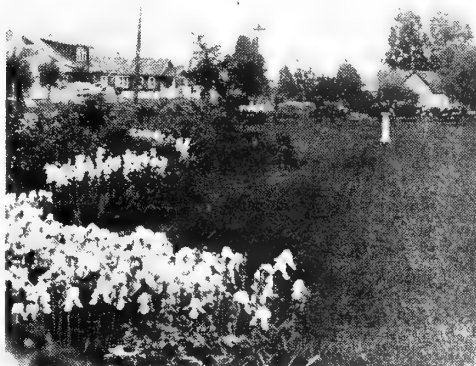
Lily Speciosium



## IRIS

## PHLOX

**IRIS SPECIAL**  
 10 CHOICE  
 Roots for  
**\$2.50 Pre-**  
**Paid (5 of**  
**our Choice**  
**Roots as-**  
**sorted)**



More Varieties on hand. EACH

- DEPUTE NOMBLOT-Copper crimson\$.50
- DAUNTLESS- Velvety-red ..... .40
- ELKARDT- Chestnut brown..... .40
- EILMOHR- Rich orchid ..... .75
- GOLDEN SPIKE- Deep yellow.... .60
- GREAT LAKES-Very clear blue.. .75
- JAKE - Large good white..... .60
- MISSOURI-Popular clear blue.. .50
- NENE-Huge purple bi-color.... .65
- OLA KOLA- Richest yellow..... .90
- RAMESIS- Russet pink..... .60
- RED DOUGLAS- Reddish-brown... .75
- REBELLION- Deep blood-red.... .75
- RUTH DAVIS-Silvery white.....1.00
- SABLE- Deepest purple-black.. .90
- SNOW FLURRY-Fine ruffled white.90
- WABASH- White with purple fall.50
- WAR EAGLE- Deepest good red....40
- DWARF IRIS- Blue for border...35

### SIBERIAN IRIS

- CAESAR'S BROTHER--Purest Blue. .40
- SNOW QUEEN- Purest white... .40

PHLOX BY NAME (labeled)  
 50¢ Each. 6 for \$2.40 Postpaid(Your Choice)  
 3 of Each-12 for 3.75 Postpaid(your choice)

### MIXED

12 Phlox all different(unlabeled)\$3.50 pre-paid

### RED VARIETIES

- FLASH- Scarlet Crimson
- LEO SCHLAGETER-Most fiery red of all phlox
- RUBY LEE- Extra large plum red flowers.

### PINK VARIETIES

- AMERICAN BEAUTY-Am.Beauty clear rose pink.
- DAILY SKETCH- Brilliant salmon pink.
- LILLIAN- Cameo pink.
- SALMON GLOW- Flame pink with salmon.

### BLUE & VIOLET PURPLE

- ROSY BLUE- Large rose blue florets.
- ROYAL PURPLE-Rich shaded violet, deeper eye.
- STARLIGHT-Beautiful lavender with white eye

### WHITE VARIETIES

- MARY LOUISE- Pure glistening white heads.
- PRIME MINISTER-pure white with crimson eye.

## PHLOX SUBULATA

(Moss or Creeping Phlox)

CREEPING PHLOX grow about 6 in. high and start blooming in May for Decoration Day. Fine creeping plant for slopes, for Rock Garden or border edging mixed with Tulips. RED, WHITE, or PINK. 3 for \$1.25; 6 for \$2.25; 12 for \$4.50 Postpaid.



Phlox  
 Creeping

# Plant 3 PEONIES

OUR CHOICE 1 RED, 1 PINK, 1 WHITE 2.75, Postpaid

## Choice PEONIES

( E ) Early blooming Peony  
(M)Midseason (L)Late bloom.

Each

CUT LEAF PEONY (E)... \$2.00

Bright red flowers on slender stems. Blooms for Decoration Day.

CHESTINE GOWDY (L)... \$ .90

Outer petals pink rimed with cream and splash of red in center.

FESTIVA MAXIMA- (E)...\$1.00

Best large white with red splash in high center.

LONGFELLOW (Early M)..\$1.25

Fine double cherry red.

MARY BRAND (M) .Red... \$1.25

MYRTLE GENTRY (L).... \$1.60

Double rose. Fragrant.

NO. 105 (M) Double red\$1.00

RUBRA SUPERBA (L).....\$1.00

Deep double red.Late.

SARAH BERNHARDT (M).. \$1.25

Apple blossom pink tipped with silver. Very nice.

WALTER FAXTON (M).....\$1.25

Vivid salmon pink.

PHYSOSTEGIA (False Dragon Head)—(C) Spikes of flowers resembling tiny snapdragons rise above attractive foliage. Lavender-rose ..... Each 25¢ (False Dragon Head)

PLATYCODON (Balloon flower) Blue flowers opening two inches across. June-July ... Each 30¢

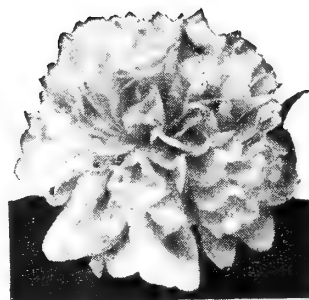
POPPY Curtis Giant— A good clear salmon pink. Each 75¢

POPPY Oriental — Large scarlet flowers May-June. Plant in early spring or August Each ..... 30¢

SEMPERVIVUM (Houseleek, Hen and Chickens) (RG). Each, 20c; clumps .....35c

STATICE (Great Sea Lavender) (RG) Broad leathery leaves; large lavender flower heads. Ideal for cutting. Grows 18 inches high. 35c each;

SWEET WILLIAM (Dianthus barbatus)— Good assortment of red, pink, scarlet and white. Bloom profusely. 30¢



Physostegia



POPPY CURTIS GIANT

Tuberous Rooted

# BEGONIAS



Start them indoors and then plant them outdoors when the danger of frost is over.

CAMELLIA FLOWERING

Resembling a camellia, all colors

## PRICES

Large, selected bulbs, 1½-2 inches in diameter; complete with directions.

All Prepaid

3 for ....\$0.95	25 for ....\$5.00
6 for .... 1.65	50 for .... 8.50
12 for .... 2.85	100 for ....13.95

Your Choice of These 8 Colors

Copper	Salmon
Crimson	Scarlet
Orange	White
Pink	Yellow

# CANNAS

Cannas make the best showing when planted in beds by themselves. The soil should be well fertilized and worked up thoroughly to a depth of 10 to 12 inches. The bulbs can be set about 12 inches apart and about 4 to 6 inches deep. Mulchings with lawn cuttings will help retain the moisture. Start bulbs in pots indoors in March or April. Do not set out until all danger of frost is over; about June 1st here in the Northwest.

**City of Portland.** Large blooms in good-sized clusters, medium rose-pink, strong stems well above the green foliage. One of the best pinks.

**The President.** 4 ft. tall. Glowing scarlet, blue-green foliage. Extra large trusses of brilliant color. The finest Red Canna of today. The foliage is entirely free from disease.

**Yellow King Humbert.** 5 ft. tall. Deep rich yellow, heavily spotted and flecked with deep red. Green foliage.

**Red King Humbert.** 5 ft. tall. The grandest Canna ever offered, a king in reality. The heart-shaped leaves are purple-madder over-bronze. The plants are crowned with immense heads of orchid-like velvety orange-scarlet, rose-tinted and blossoms incomparably beautiful.

30¢ each. (12 for \$2.85 Prepaid,

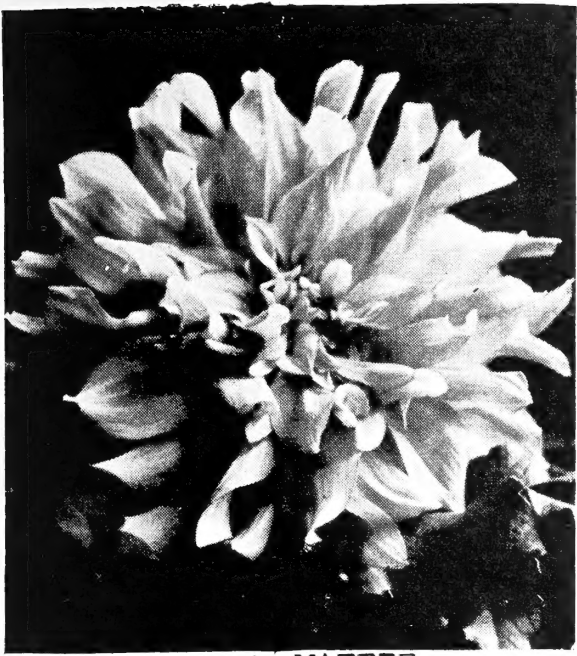
## EVERGREEN SEEDS

Shade the seed beds and keep moist.

COLORADO BLUE SPRUCE	In
BLACK HILL SPRUCE	25¢
NORWAY (Minn.) PINE	Pkts.
PONDEROSA BULL PINE	post
AMERICAN ARBOR VITAE	paid



**6 DAHLIAS** (6 Colors) . . . . . \$ 1.85  
Our Selection from Varieties POSTPAID



MAFFIE



OSA HELEN



THE COMMADORE

(D) Large Double Flower 8-12" size.  
(M) Less than 8" size (C)Cactus

	EACH	PER 3
ALICE MAY-(D) Fine large white....	\$ .75	\$1.90
BETTY ZANE (D) Large pink favorite	.50	1.35
BONNIE BLUE (M)Fine bouquet size..	.35	1.00
BLUE RIVER (D) Newer better blue..	.50	1.35
BURCH FORAKER (D)Sulpher yellow over-cast scarlet. Large, good bloomer...	.90	2.50
CALIFORNIA IDOL (D)Fine large yellow	.50	1.35
DADDY KEMP (D) Huge reddish purple..	.50	1.35
DETROITER (D) Finest rich dark red..	.50	1.35
DR. TEVIS (MD) Salmon Pink Beauty...	.40	1.00
ELLINOR VANDERVEER (MD) Bright rose.	.40	1.00
ETENARD DE LYON (C) Clear Lavender..	.40	1.00
GIRL OF HILLCREST (D) Golden Buff...	.50	1.35
INCANDESCENT (D) Bronze-yellow-pink.	.50	1.35
KEMP'S WHITE WONDER (D)True white...	.40	1.00
KEMP'S GLAMOURUS(D)Yellow and Pink..	.90	2.50
KING ALFRED(D) Red. Light reverse...	.50	1.35
MAFFIE (CD)Magnificent glowing red..	.90	2.50
MARSHALL'S PINK (MD) Light Pink.....	.40	1.00
MARGARET W. WILSON(D)White to Pink..	.40	1.00
MRS.I.DE VER WARNER(MD)Purest orchid	.40	1.00
NEW GLORY(MD)Lav.-Orchid Pink.Pure..	.40	1.00
OSA HELEN(C) Huge Am.Beauty Red.....	.75	1.90
PREMIER'S WINSOME (D) Flesh Pink....	.90	2.50
ROSE GLORY (M)Good cut flower Rose..	.40	1.00
THE COMMODORE (D)Deep golden yellow	.50	1.35
ZANT'S PINK-(D) Finest dark pink....	.75	1.90

12 (40-50¢ Roots)  
\$3.50 Postpaid.

12 (75-90¢ Roots)  
\$6.95 Postpaid

Plant Dahlias  
5 to 6 inches  
deep.

Dahlias and  
Gladioli Bulbs  
for \$2.00 or  
more sent to  
you Postpaid

**BLUE LABEL DAHLIAS**  
*Sure to Grow Free from Disease True to Name*

**EXHIBITION 6 DAHLIAS 6**

No. E 1 DECORATIVE TYPE  
Comprising the following varieties, each root wrapped and labelled

HERSEY'S BEAUTY, clear pink  
JANE COWL, bronze  
MRS. I. de VER WARNER, lav  
PRIDE OF CALIFORNIA, red  
SAGAMORE, buff  
WHITE KING, white

**Complete Cultural Directions Inside**  
*Grow where Dahlias Grow best*

**6 for \$1.95**  
postpaid -

# GLADIOLI BULBS

PRICES ON GLAD BULBS EXCEPT WHEN MARKED SEPARATELY. BEAUTIFUL COLORS • RIVALS OF THE RAINBOW  
 (3 for 30¢ ; 12 for ..\$1.00)  
 25 for \$2.00 Postpaid Asst.

3 or more of Each in Separate Bags Labeled (Your Choice)  
 3 for 40¢ ; 12 for ...\$1.25  
 25 for \$2.35 Postpaid to You  
 R - Ruffled Varieties  
 \* - Higher Priced

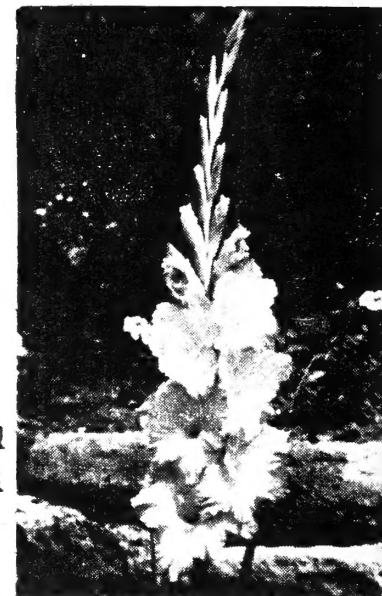
## Rainbow Collection

50 Bulbs, 5 Each of 10 Different Colors  
 Large Bulbs, Unlabeled.

**\$3.50, Prepaid**

190 Bulbs, 10 Each of 10 Different Colors.  
 Large Bulbs, Unlabeled.

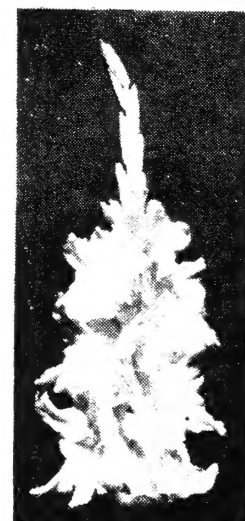
**\$6.50, Prepaid**



**SUPER GLADS**

**RUFFLED**

**GLADS**



R-Ruffled Varieties on this page. 12 for \$2.00 Postpaid  
 1 of Each including King David. 3 of Each, 36 for \$5.35 Postpaid

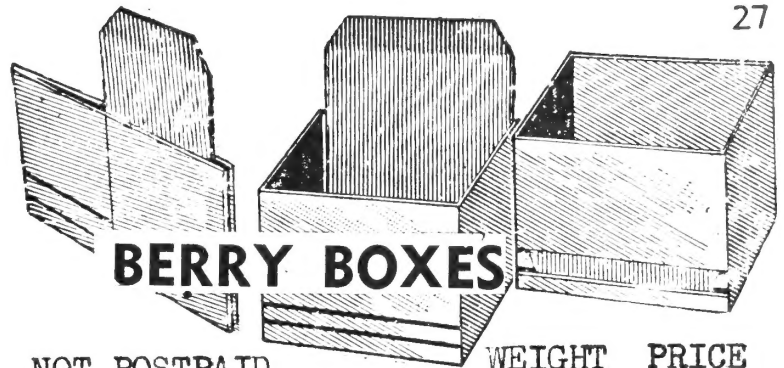
VARIETY	COLOR
Abu Hassan,	dark violet blue.....
Agitator,	red.....
Arthusa,	buff.....
R Alpine,	ruffled white.....
BASHFUL DAMSEL-	Blush Pink.
BUCKEYE BRONZE-	Showy bronze
Birch Red,	dark red.....
R-Barcarole,	orange.....
Beacon,	red, yellow spot.....
Black Opal,	dark red.....
Blue Beauty,	blue.....
Bit O'Heaven,	orange.....
Boulogne,	deep wine.....
Bouton d'Or,	deep yellow.....
R-Burma,	deep rose red. ruffled..
Cardinal Spellman,	red violet....
Commando,	red.....
CUPID-Dainty white,	curly.
COPPER BRONZE	-Bronze
Duna,	pinky buff.....
R-Debutante,	orange yellow. ruffled
R-Donella,	early pink.....
DEBONAIRE-Large LaFrance Pink	
ETHEL CAVE COLE-Early lt pink	
R-Elizabeth the Queen,	lavender....
Ethel Cave Cole,	large light pink....
R-Fair Angel,	light creamy white.....
Flaming Sword,	red.....
Fire Brand,	dark red.....
Florence Nightingale,	white.....
R Golden Chimes,	light yellow..
Heavenly White,	pale blue white...
Huntress,	lavender.....
Harry Hopkins,	wine red.....
Jeannie,	salmon pink.....
J. V. Konynenburg,	orange red....

VARIETY	COLOR
R*King David,	extra fine purple ruffl
Each 75¢; 3 for \$1.95 Postpaid	
La Paloma,	orange.....
R Lavender Prince,	lavender.....
Lavender & Gold,	lavender & gold.
Lady Jane,	lemon yellow.....
Miss Wisconsin,	bright pink.....
Mansoor,	blood red.....
Modern Times,	crimson purple....
Margaret Fulton,	coral pink.....
Mrs. Lulu Hunt,	rose pink.....
ORANGE GOLD-Large new gold.	
*Orchid Giant,	light violet. Ea. 25¢.
Picardy,	salmon.....
Pactolus,	apricot cream, red spot.
Polynesie,	salmon pink, yellow center
R*Poets Dream,	ruffled orchid Ea. 20¢
Pride of Wanakah,	deep rose.....
Purple Heart,	light purple.....
Purple Supreme,	dark purple.....
Red Charm,	red.....
Rewi Fallu,	dark red.....
Rosa Van Lima,	light pink.....
R-Silver Wings,	silvery white. ruffled
Shawnee,	dark smoky.....
R-Spic & Span,	pink.....
Snow Princess,	white.....
*Sherherezade,	pink, red spot. 25¢ea
Spotlight,	yellow, red spot.....
Token,	strawberry red.....
True Love,	light pink, white throat...
*Uhu,	dusty brown smoky. 25¢ each.
Vulcan,	deep wine.....
Wings of Song,	pink, white throat....
White Butterfly,	white.....
White Gold,	light cream.....
R-Yellow Herald,	light yellow.....

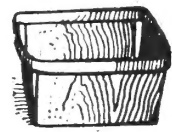
# VEGETABLE SEEDS

Not Postpaid--lb.

Postpaid in 10¢ Pkts.— Oz.	1/2 lb.	1 lb.
BEANS-Navy or Gr.North	\$.12	\$.45
BEANS-Golden or Bl.Wax	.10	.15 .50
BEETS-Detroit Dark Red	.20	.50 1.50
CARROTS-Hf.Long;Red Core	.25	.60 2.00
CABBAGE-Fl.Dutch;Copen.	.45	1.20 . . . .
CUCUMBER-Pickle;Wh.Spine	.20	.65 2.10
CORN-Golden Bantam Impr.	. . .	.20 .55
CORN-Gl.Cross Bantam	. . .	.25 .70
CORN-Popcorn Jap.Hulless	. . .	.20 .50
LETTUCE-'rly Curl; Head.	.25	.75 . . .
MUSKMELLON-Gold;Hon.Rock	.25	.75 . . .
ONIONS-Red,Yel.Danvers	.40	1.25 . . .
PARSNIPS-Impr.Holl.Crown	.20	.55 1.60
PARSLEY-Triple Curled. .	.20	.55 1.75
PEAS-Alaske;Gem;Laxton;	. . .	.15 .45
PUMPKIN-Early Sugar;Chey..	.20	.60 2.00
RADISH-Sc.Tur.;Wh.Tip;Ice.	.15	.45 1.25
RUTABAGA-Am., Can.Purp.Top.	.15	.30 .80
SPINACH-King of Denmark .	.20	.40 .90
SQUASH-Hubbard;Tbl.Queen	.20	.60 2.10
TOMATOES-Standard Var.	.80 1/2 oz.	.50 2.10
WATERMELLON-Hon.Dew;Sweet	.20	.60 2.10



NOT POSTPAID	WEIGHT	PRICE
200 Pint Boxes Folding	17 lb.	\$3.55
100 Pint " Folding in bulk	8 1/2 lb	2.00
125 Quart Bx.Fold.in case	14 lb.	2.60
50 Qts.folding in bulk	5 lb.	1.25
100 Qt. Baskets	8 1/2 lb.	2.50
500 Qt. Baskets	40 lb.	11.50
100 Pint Baskets	7 lb.	1.85
500 Pint Baskets	35 lb.	9.00



Prices Subject to Change

## FERTILIZER AND SUPPLIES

NOT POSTPAID	10 lb	50 lb.	100lb
MELORGANITE Fertilizer	\$.65	\$ 2.70	\$ 4.50
SCOTT'S TURF BUILDER	1.35	3.95	7.85
FOLDING PLANT SUPPORTS -6 for			\$1.75
SCALECIDE- Dormant oil spray for bark on Cotoneaster, Fruit Trees, etc.	Qt.	1.25	
WETTABLE SULPHUR-Use on Evergreen for Red Spider & discourage dogs.	2lb.		\$.75

A Fine Lawn Creates an Atmosphere of Refinement

## LAWN GRASS SEED

Especially Adapted to the Upper Mid-West

NOT POSTPAID

**LANDSCAPE MIXTURE-** Blue Grass, Red Top, and White Clover blend (Clover optional) lb. \$1.75  
 10 lbs. Rate \$1.65; over 50 lbs. per lb. \$1.50  
 Seed 1 lb. per 200 square feet.

**STANDARD MIXTURE-** Rye Grass and Fesques added to the above Mixture for quicker stand. \$1.50 per lb. 10 lbs. \$14.00; Over 50 lbs. @ \$1.35

**MERION BLUE GRASS-** Sows 750 sq.ft. per pound. It makes a tougher turf. Price per lb. \$4.90

**KENTUCKY BLUE GRASS-** A native grass. lb. 1.75

**POA TRIVIALIS-** Shade grass. Per lb. \$1.50

**CREEPING BENT-** Used in golf greens. lb 1.75

**WHITE DUTCH CLOVER-** Pure seed per lb. \$1.60

## Parcel Post Rates

Packages up to 70 lbs. and not more than 100 in. length plus girth (distance around at widest point) may be mailed to all Zones—with certain size and weight restrictions to 1st Class Postoffices. Allow postage on total weight only. We will return every cent not actually needed for postage.

ZONE →	Local	Shipping Weight of Your Order			
		1-2	3	4	5
		Not Over 150 Miles	151 to 300 Miles	301 to 600 Miles	601 to 1000 Miles
Up to 8 ounces.....	2c for first 2 ounces and 1c for each additional oz.				
9 oz. to 1 lb.....	18c	23c	23c	24c	26c
1 lb. 1 oz. to 2 lbs.....	20c	27c	29c	31c	36c
2 lbs. 1 oz. to 3 lbs.....	21c	31c	34c	38c	45c
3 lbs. 1 oz. to 4 lbs.....	23c	35c	39c	45c	54c
4 lbs. 1 oz. to 5 lbs.....	24c	39c	44c	52c	63c
5 lbs. 1 oz. to 6 lbs.....	26c	43c	49c	59c	73c
6 lbs. 1 oz. to 7 lbs.....	27c	47c	54c	66c	82c
7 lbs. 1 oz. to 8 lbs.....	29c	51c	60c	73c	91c
8 lbs. 1 oz. to 9 lbs.....	30c	55c	65c	80c	\$1.00
9 lbs. 1 oz. to 10 lbs.....	32c	59c	70c	87c	1.10
10 lbs. 1 oz. to 11 lbs.....	33c	63c	75c	93c	1.19
11 lbs. 1 oz. to 12 lbs.....	34c	67c	80c	\$1.00	1.28
12 lbs. 1 oz. to 13 lbs.....	36c	71c	85c	1.07	1.37
13 lbs. 1 oz. to 14 lbs.....	37c	75c	90c	1.14	1.47
14 lbs. 1 oz. to 15 lbs.....	39c	79c	96c	1.21	1.56
15 lbs. 1 oz. to 16 lbs.....	40c	83c	\$1.01	1.28	1.65
16 lbs. 1 oz. to 17 lbs.....	42c	87c	1.06	1.35	1.74
17 lbs. 1 oz. to 18 lbs.....	43c	91c	1.11	1.42	1.84
18 lbs. 1 oz. to 19 lbs.....	45c	95c	1.16	1.49	1.93
19 lbs. 1 oz. to 20 lbs.....	46c	99c	1.21	1.56	2.02
30 lbs.....	61c	\$1.38	1.73	2.25	2.95
40 lbs.....	75c	1.78	2.24	2.94	3.87
50 lbs.....	90c	2.17	2.76	3.63	4.80

Address All Orders to

# SWEDBERG NURSERY

Battle Lake, Otter Tail County, Minnesota

"Service Quality and Fair Prices since 1915"

**STATE INSPECTORS HAVE INSPECTED ALL STOCK OFFERED**



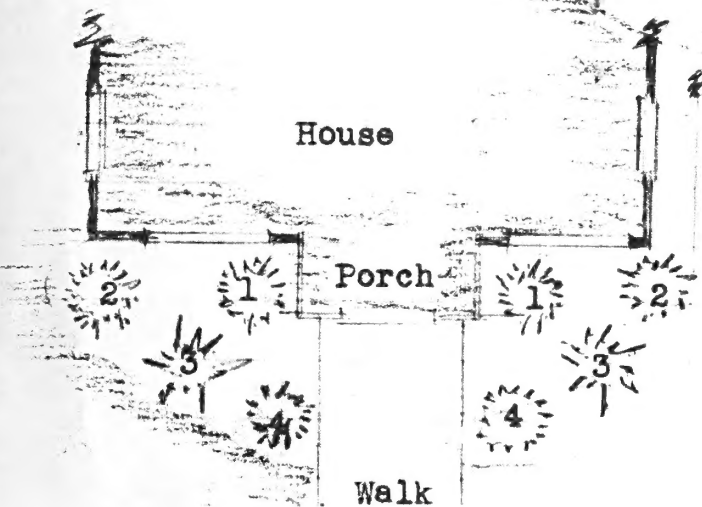
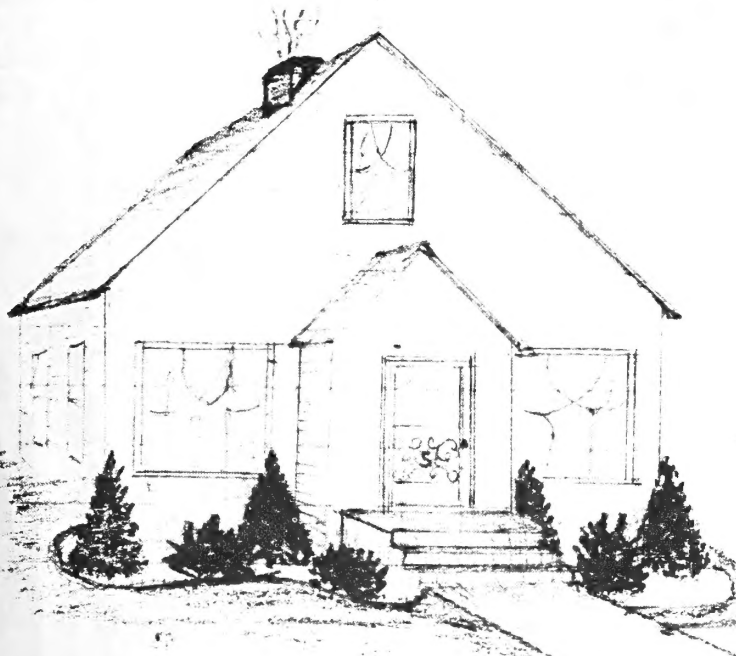
Sec. 34.66 P. L. & R.

U. S. POSTAGE

PAID

Battle Lake, Minn.

Permit No. 1



Library U.S. Dept,  
of Agriculture Zone  
Washington DC C.

POSTMASTER: IF NOT DELIVERED IN  
10 DAYS, CHECK REASON  
RETURN POSTAGE GUARANTEED.

8 EVERGREENS  
AS SHOWN IN  
PICTURE TO  
THE LEFT

←  
MUDDED ROOTS  
4-6 Yrs. old.  
Transplanted  
8 Evergreens  
\$11.95  
Postpaid  
10"-18" Sizes

## PYRAMID

\$9.95



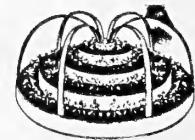
## ACCESSORIES



### PLASTIC COVER

New type, weathers well.  
Acts as a cold frame or  
greenhouse for early  
planting and frost pro-  
tection.

\$6.95



### SUPPORT STRIPS

If you plan on using either  
plastic cover or netting,  
strips must be installed  
first as support.

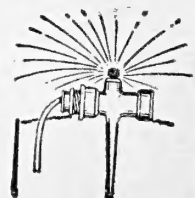
\$3.95



### NETTING

Covers support strips  
and protects bed from  
birds. Also holds leaves  
in winter as cover.

\$6.95



### COMPLETE SPRINKLER

Includes nozzle, copper  
tubing and hose connec-  
tion at base. Runs  
through bed and out  
under bottom band to  
connect with garden  
hose.

\$5.25

## EVERGREEN PLANTING ABOVE AS SHOWN

KEY	QUA.	VARIETY	B&B Size	Price
1...	2...	Arbor Vitae Pyr.	1 1/2 ft.	\$7.00
2...	2...	Cedar Juniper	1 1/2 ft.	9.00
3...	2...	Savin Juniper	15 in.	9.00
4...	2...	Mugho Dwarf Pine	12 in.	12.00
8 B&B EVERGREENS				\$37.00
SPRING PRICE Express Collect				\$32.00

Larger Size	B&B	SIZE	PRICE
2 1/2	-3 ft.	\$15.00	
2 1/2	-3 ft.	17.00	
15-18	In.	12.00	
15-18	in.	17.90	
Express		\$61.90	
Collect		\$55.00	